

# 110± ACRES

HWY 326 - LEVY COUNTY, FL

---

- ✦ UNBELIEVABLE PRICE FOR SUCH GORGEOUS LAND!
- ✦ OVER  $\frac{3}{4}$  OF A MILE OF PAVED ROAD FRONTAGE.
- ✦ PROPERTY IS COMPRISED OF A BEAUTIFUL MIXTURE OF NATURAL HARDWOOD AND PLANTED PINE, WITH THE PINE HAVING BEEN PLANTED OVER 10 YEARS AGO
- ✦ THE ENTIRE 110± ACRES IS COMPRISED OF TWO NON-CONTIGUOUS TRACTS THAT ARE WITHIN  $\frac{3}{4}$  OF A MILE FROM ONE ANOTHER ON HWY 326:
  - TAX ID #02596-000-00 IS 51.54± ACRES
  - TAX ID #02601-000-00 IS 58.45± ACRES
- ✦ THE ENTIRE 110± ACRES ARE ZONED FORESTRY RURAL RESIDENTIAL WHICH ALLOWS FOR SUBDIVISION INTO 20 ACRE TRACTS
- ✦ CURRENT OWNER HAS HAD THE ENTIRE 110± ACRES SURVEYED OUT INTO FOUR INDIVIDUAL TRACTS RANGING IN SIZE FROM 25.29 AC - 31.93 AC
- ✦ GREAT INVESTMENT PROPERTY AS IT'S THE LOWEST PRICE ON THE BLOCK!!!
- ✦ CALL TODAY FOR MORE INFORMATION
- ✦ 110± IS BEING OFFERED AS WHOLE AT ONLY \$11,950 PER ACRE!!!

**\$1,314,500**



(352) 401-3755

WWW.MCBRIDELAND.COM

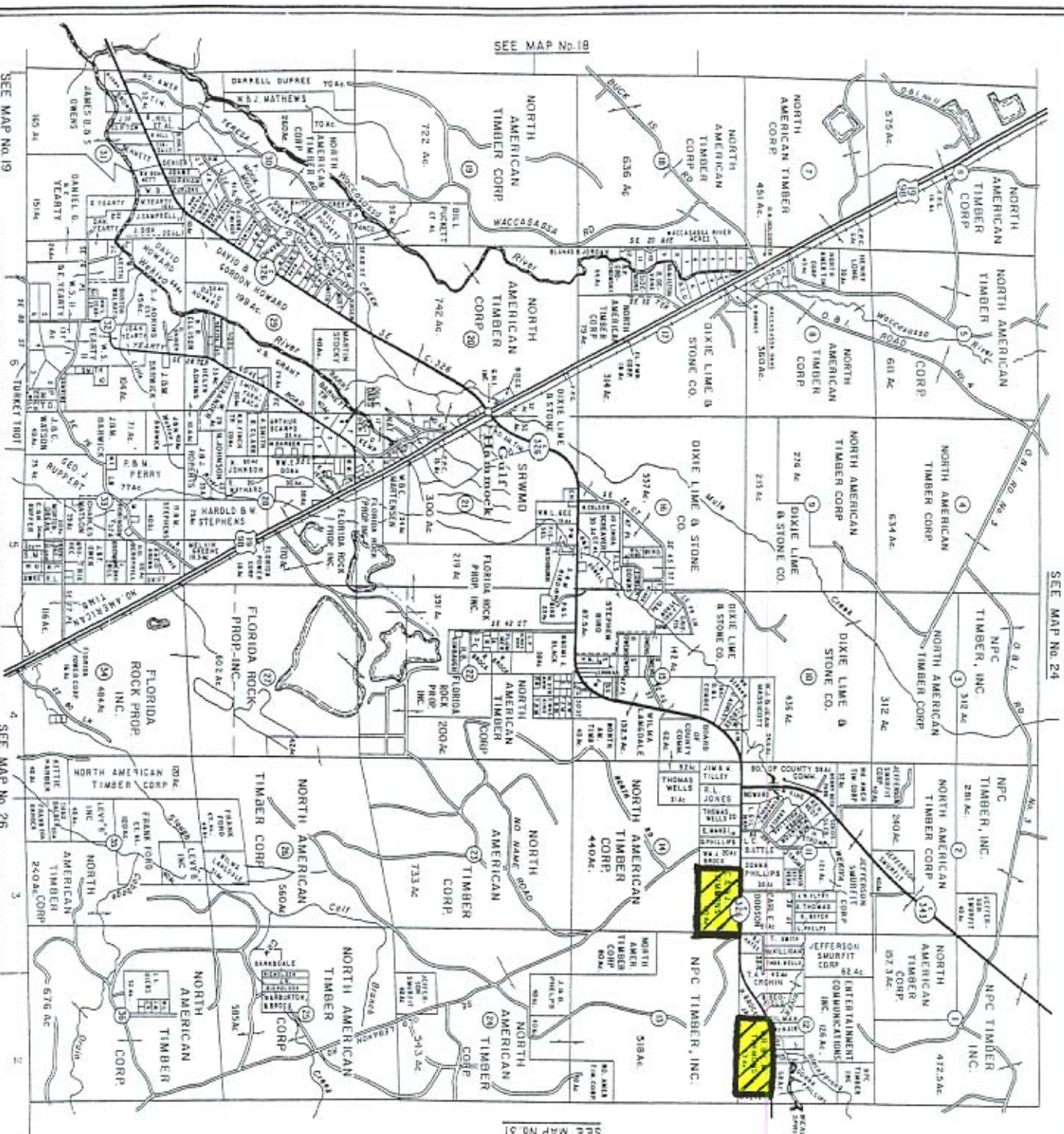


SEE MAP No. 24

7



SEE MAP No. 31



SEE MAP No. 18

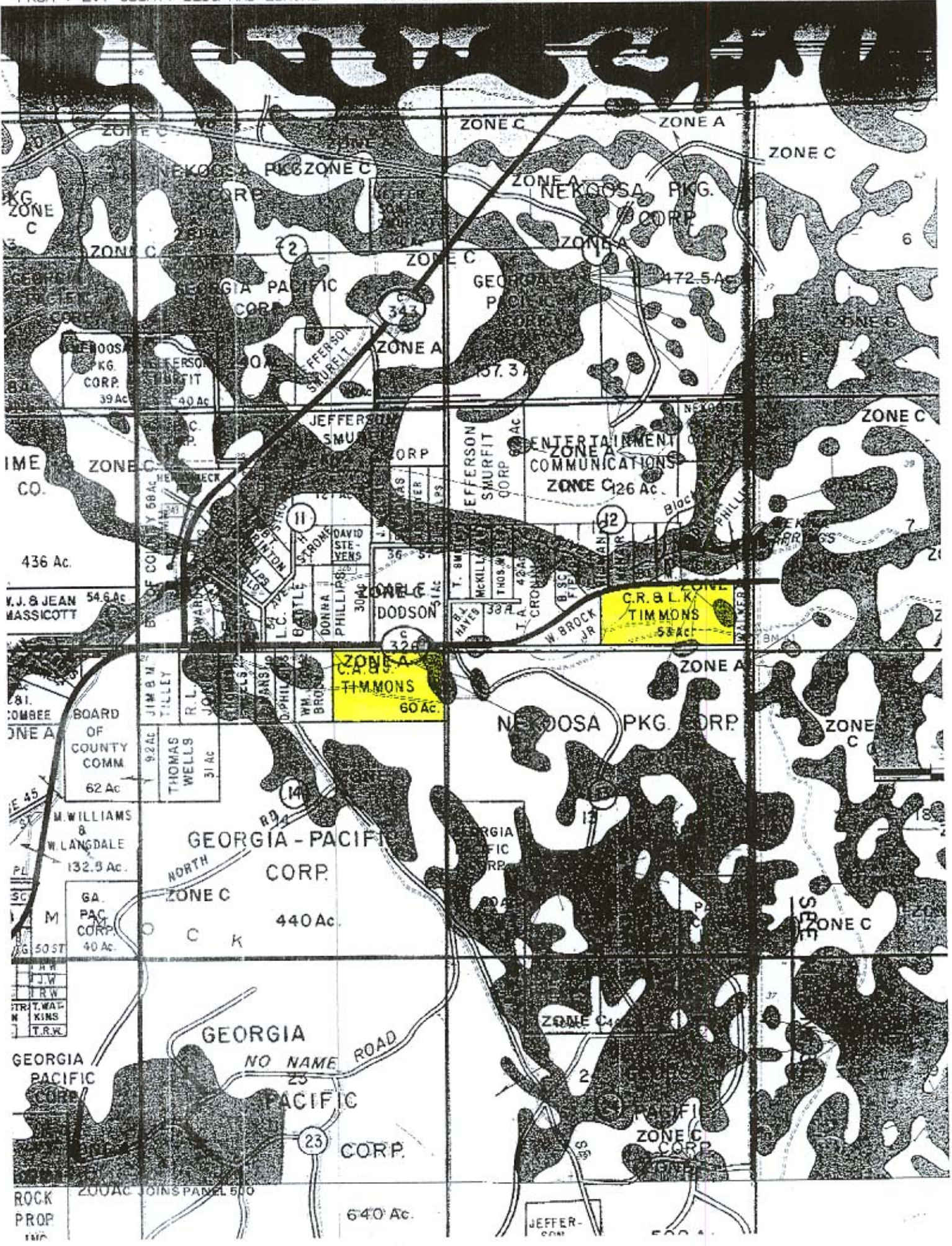
SEE MAP No. 19

THIS MAP COMPILED AND DRAWN BY PERMILL CROFT - DDB - REVISED/1006, 1988, 1989, 1990, 1991, 1992, 1993,

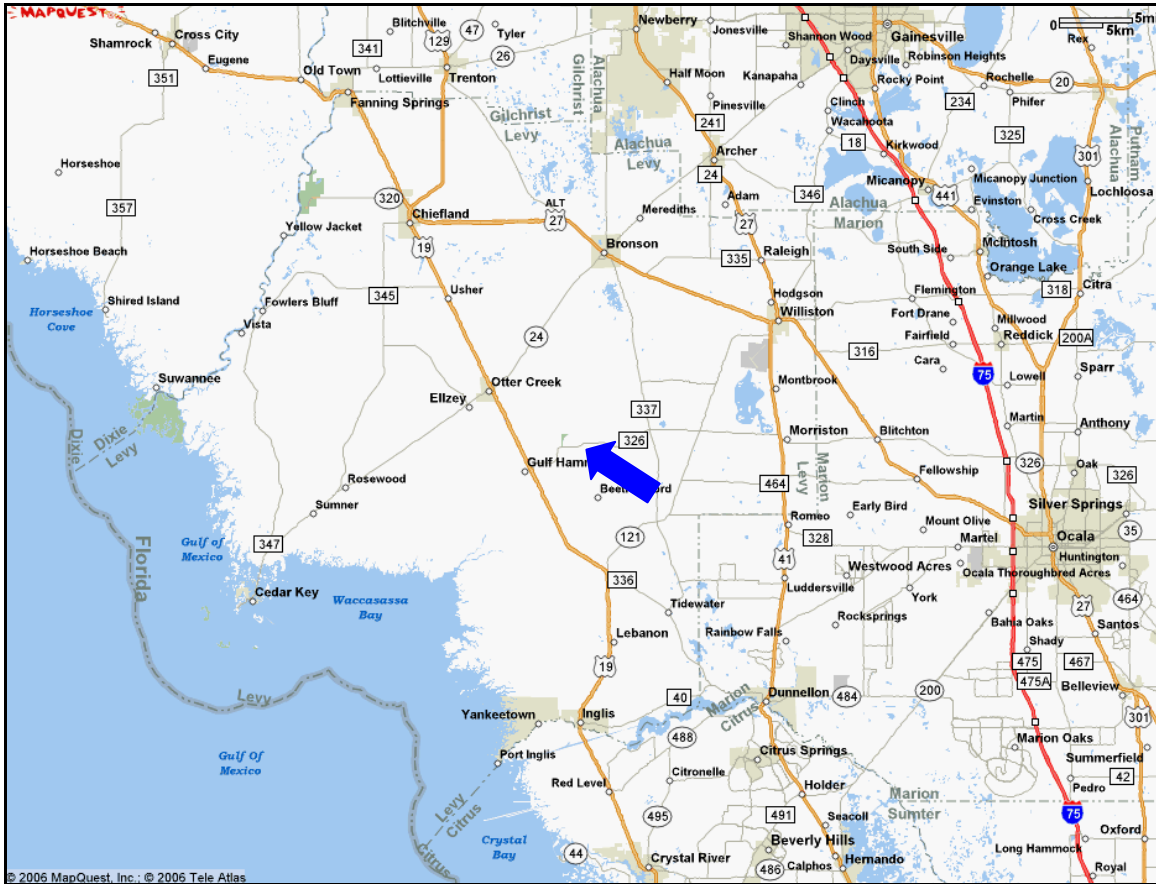
SEE MAP No. 26

1974, 1985, 1995, 1997, 1998, 1999

TWP. 14 S.  
RGE. 16 E.  
Levy County, Florida



# DIRECTIONS TO 110 ± ACRES ON HWY 326 IN LEVY COUNTY, FL



FROM OCALA, PROCEED NORTH ON US HIGHWAY 27 UNTIL YOU REACH THE INTERSECTION OF US HIGHWAY 27 AND HIGHWAY 326 IN BLITCHTON. MAKE A LEFT (HEADING WEST) ON HIGHWAY 326. PROPERTY IS LOCATED ON THE RIGHT (SOUTH SIDE OF HWY 326) APPROXIMATELY 20 MILES FROM US HIGHWAY 27. SIGNS ARE LOCATED ON THE RIGHT OF WAY FOR EACH TRACT.