

37± acres - Hwy 225

Ocala, Florida



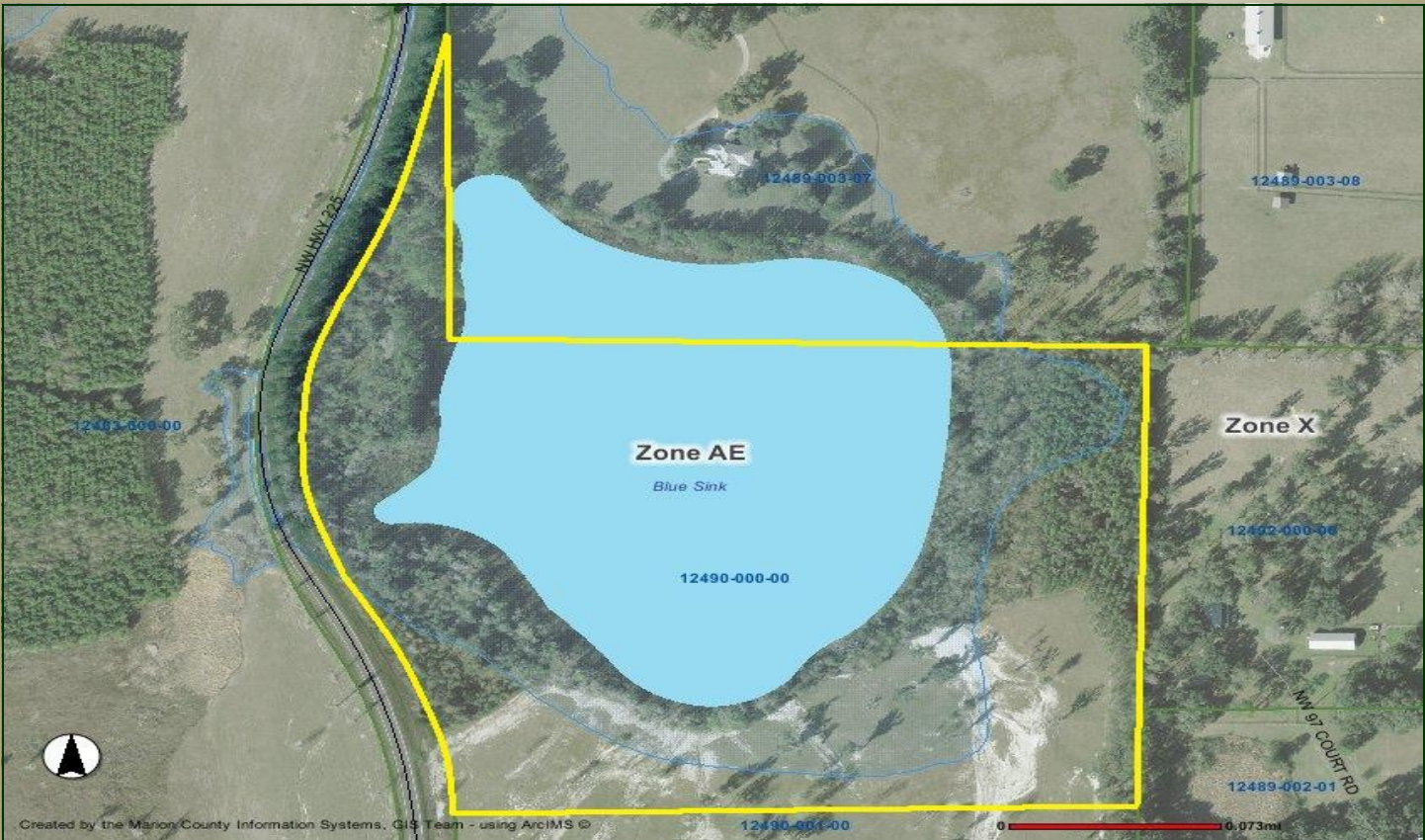
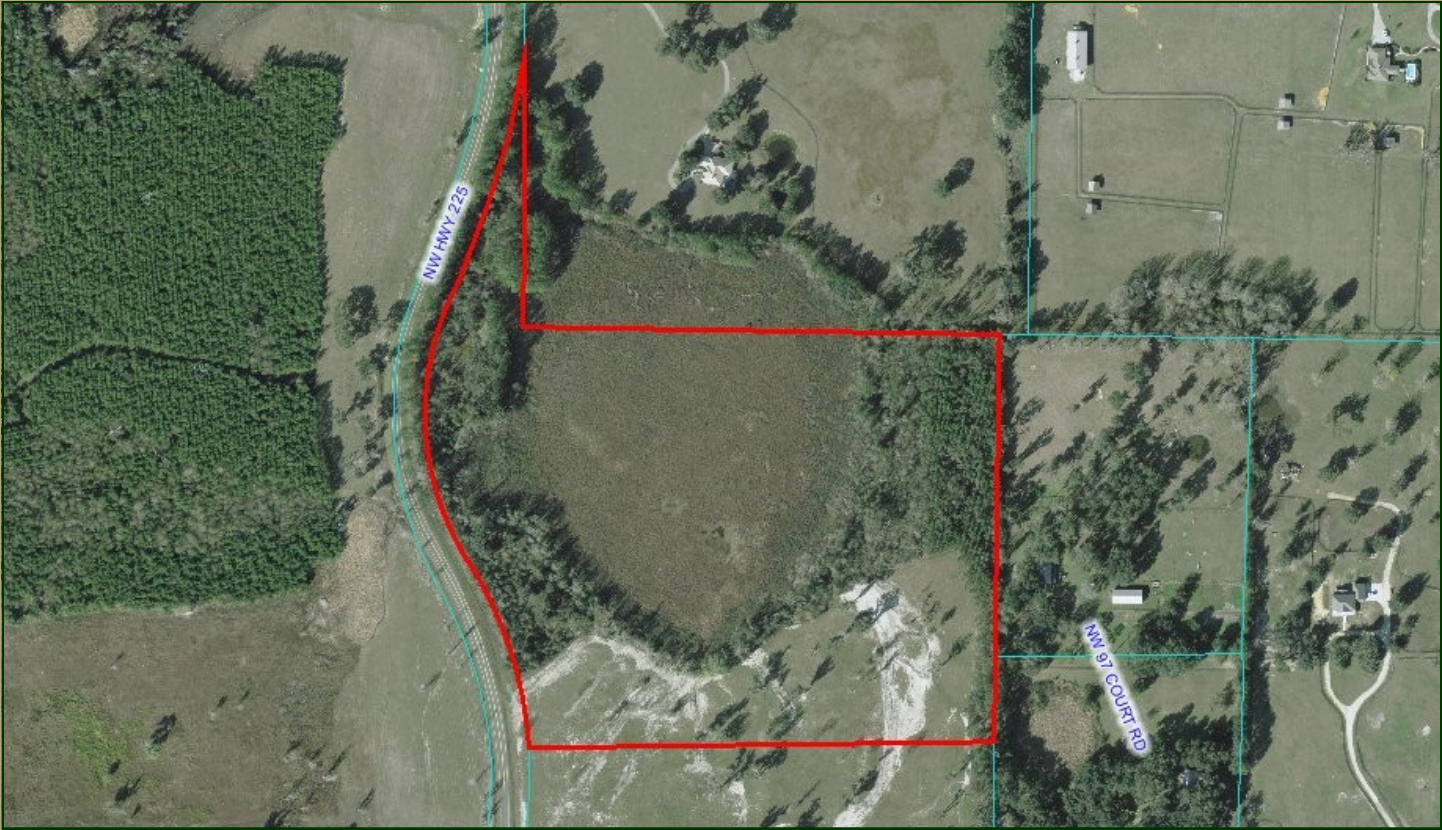
- **WHAT AN AMAZING OPPORTUNITY!!!** 37± gorgeous acres with tons of character and curb appeal !
- Located in the Heart of Horse Country, this incredible opportunity is being offered at only **\$8,105 per acre!**
- Paved Road Frontage on Prestigious Hwy 225, makes this property an excellent site for your dream farm at an incredible price!
- There are approximately 14± acres in well-groomed, mature bahia pasture overlooking a large pond that looks like a wildlife sanctuary.
- Plenty of room for a home-sites & barns.
- Marion County Tax Parcel ID # 12490-000-00 (2009 RE Taxes = \$120).
- **CALL TODAY** so that you don't miss out on this opportunity!
- Being offered whole at only... **\$299,900 (\$8,105 / ac)**

www.mcbrideland.com

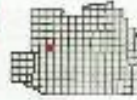


Phone: (352) 401-3755

Fax: (352) 401-3757

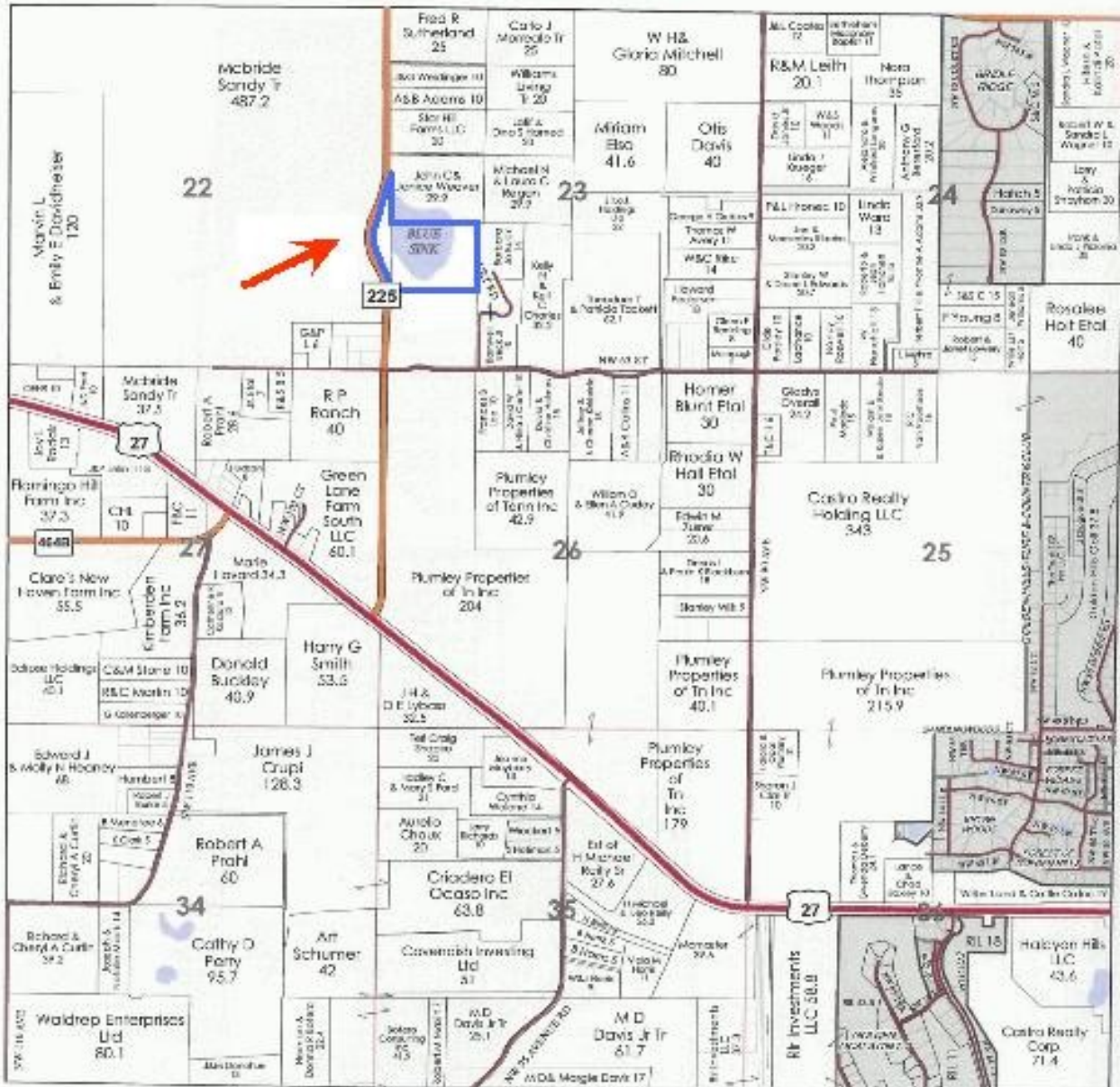


T.14S. - R.20E. (S.E.)



(S.E.)

See T.14S. - R.20E. (N.E.) Page 68



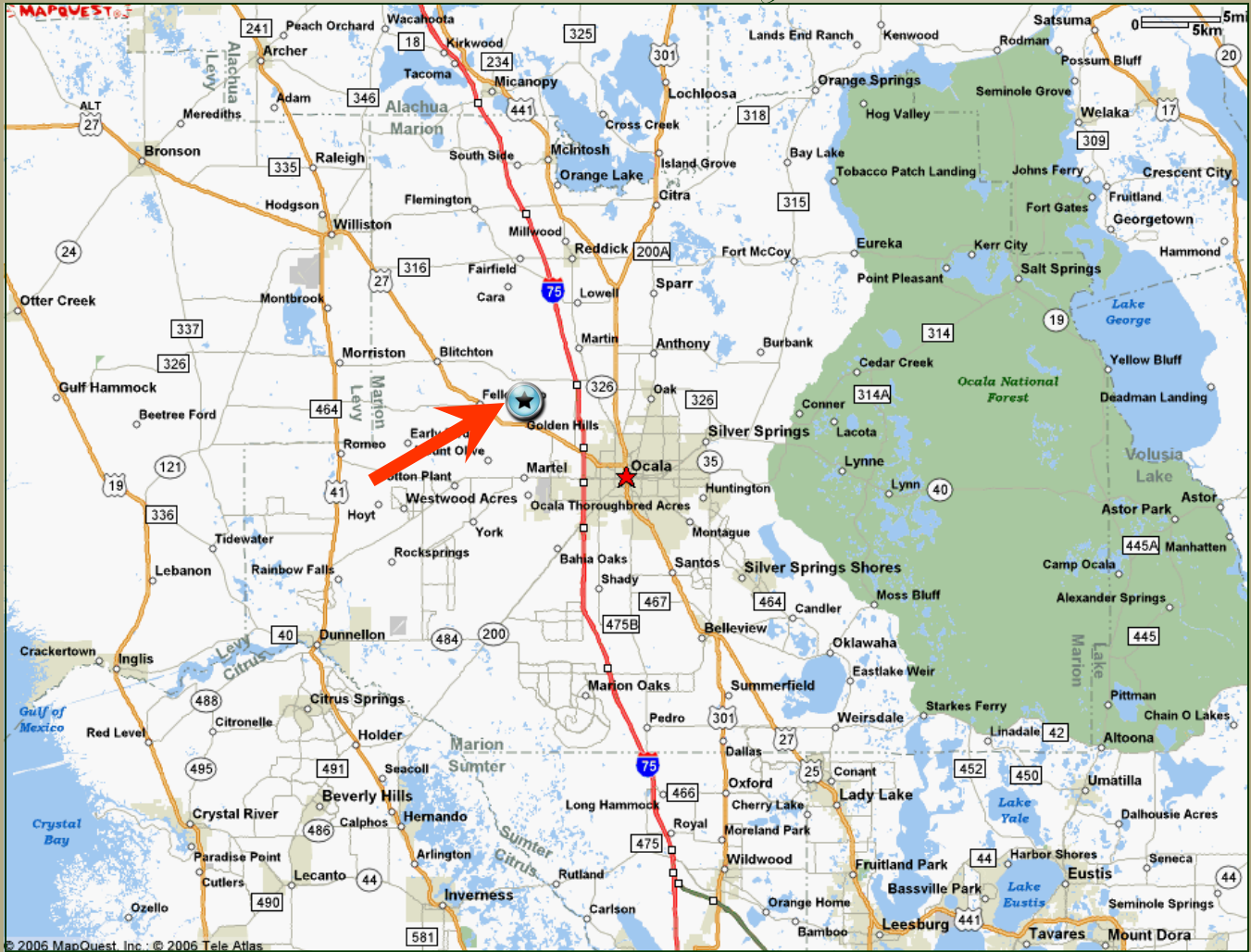
See T.14S. - R.20E. (S.W.) Page 69

See T.14S. - R.20E. (S.W.) Page 73

See T.15S. - R.20E. (N.E.) Page 104

Directions

37 ± acres on Hwy 225



From Ocala:

Take US 27 NW towards Williston. Make Right (heading North) on Hwy 225. Property located approximately 9/10 of a mile on the Right (East side of the road).

Call Nathan Garcia at McBride Land to set up an appointment to view the property (352) 401-3755 or (352) 362-5226.