

# 37± acres - Hwy 225

## Marion County, FL

---

McBride Land & Development, Co.

- \* Absolutely the BEST DEAL in NW Marion County!!!
- \* Located in the heart of horse country, this unique property is being offered at **only \$6,754 per acre!**
- \* Paved road frontage on prestigious Hwy 225
- \* Excellent location for your dream farm at an unbelievable price
- \* Property overlooks Plumley Farm and other esteemed horse properties
- \* There are approximately 8 acres of uplands with the majority of the remaining acreage being comprised of a large grass pond that provides an incredible wildlife sanctuary
- \* Don't miss out on this incredible opportunity
- \* p.o. Marion County Tax Parcel ID #12490-000-00
- \* Being offered whole at only:

**\$249,900**



1553 SEFort King Street  
Ocala, FLorida 3471

Phone (352) 401-3755  
Fax (352) 401-3757  
[www.mcbrideland.com](http://www.mcbrideland.com)

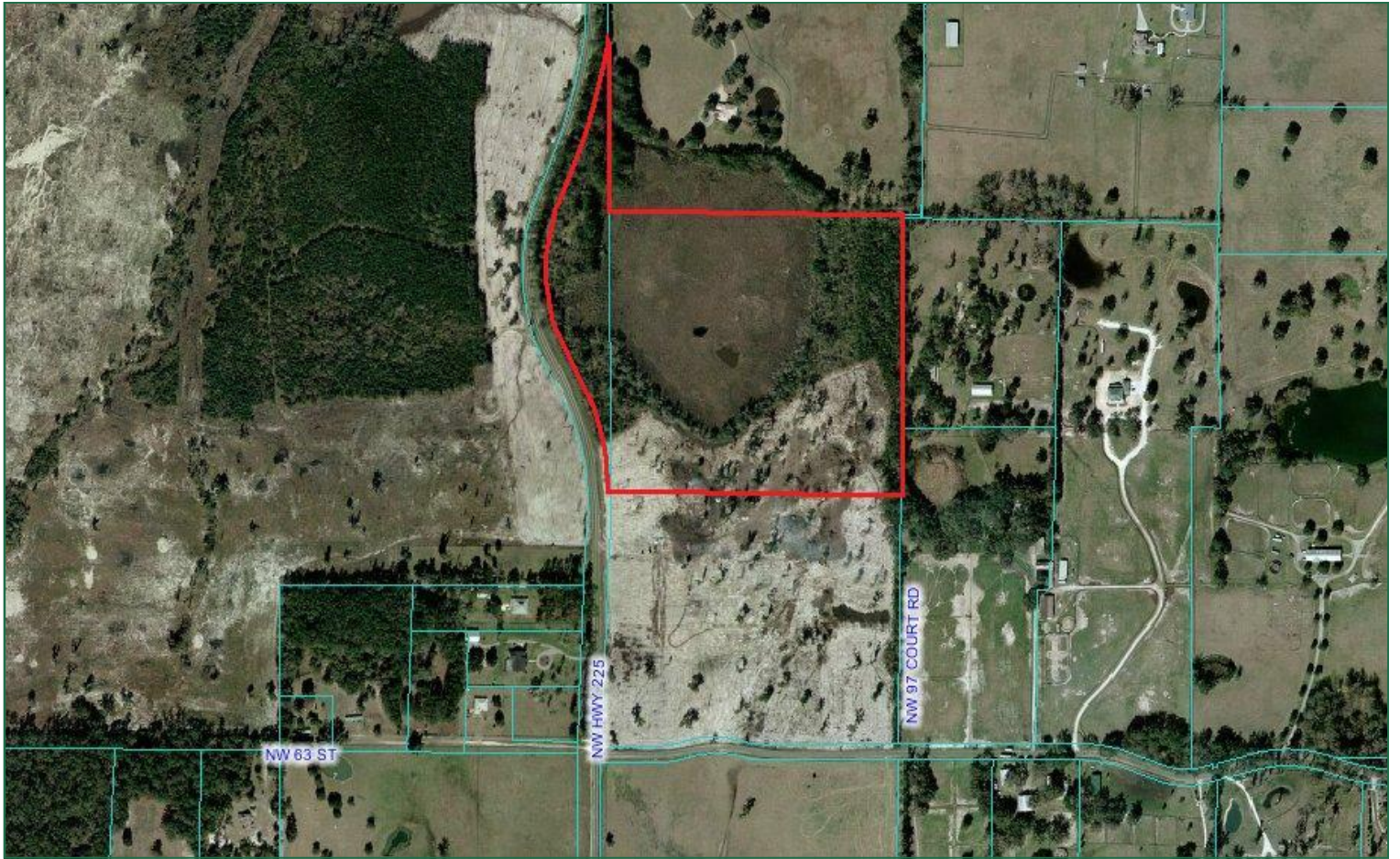


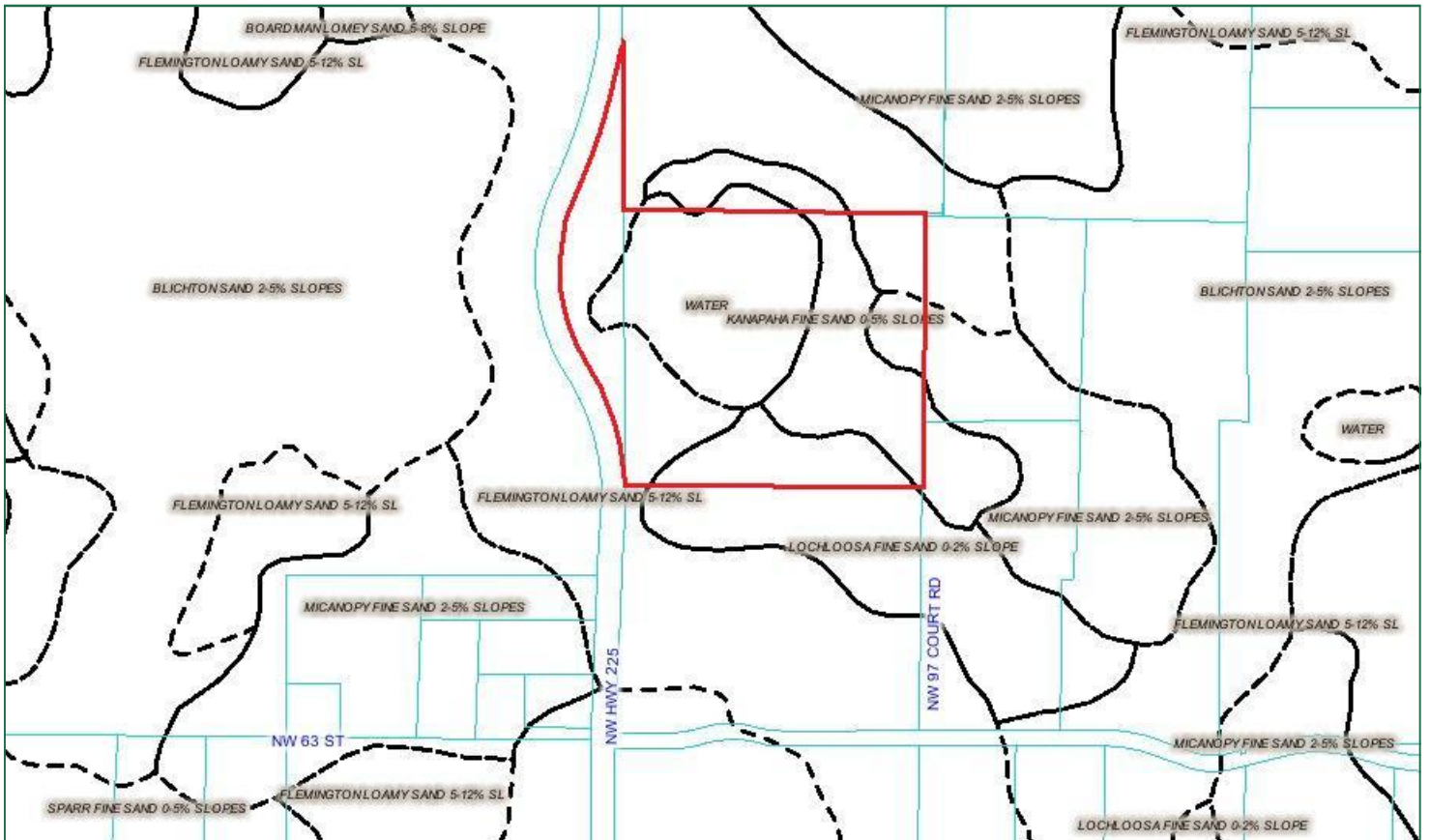
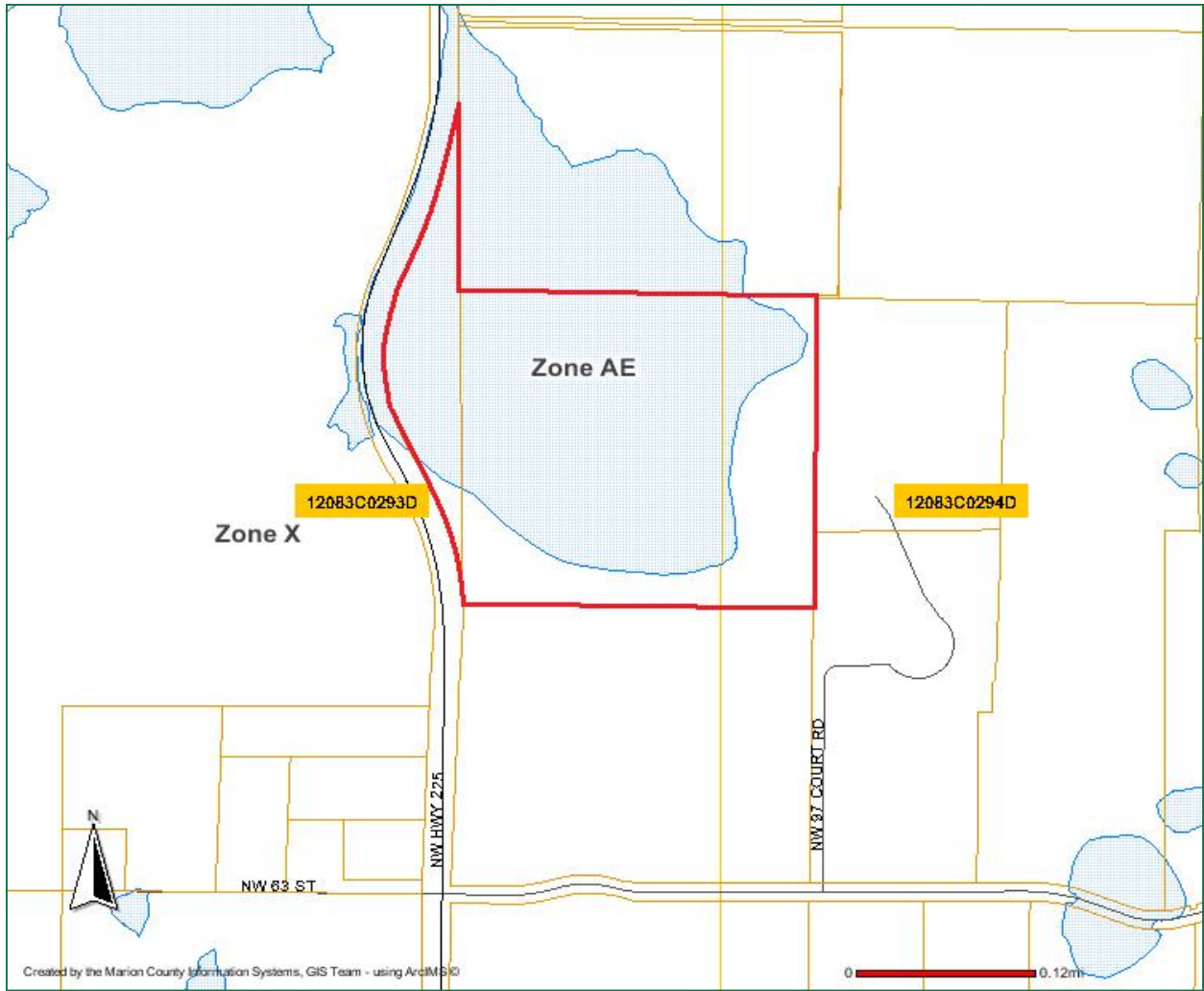
McBride Land & Development, Co.



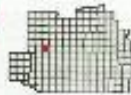
McBride Land & Development, Co.





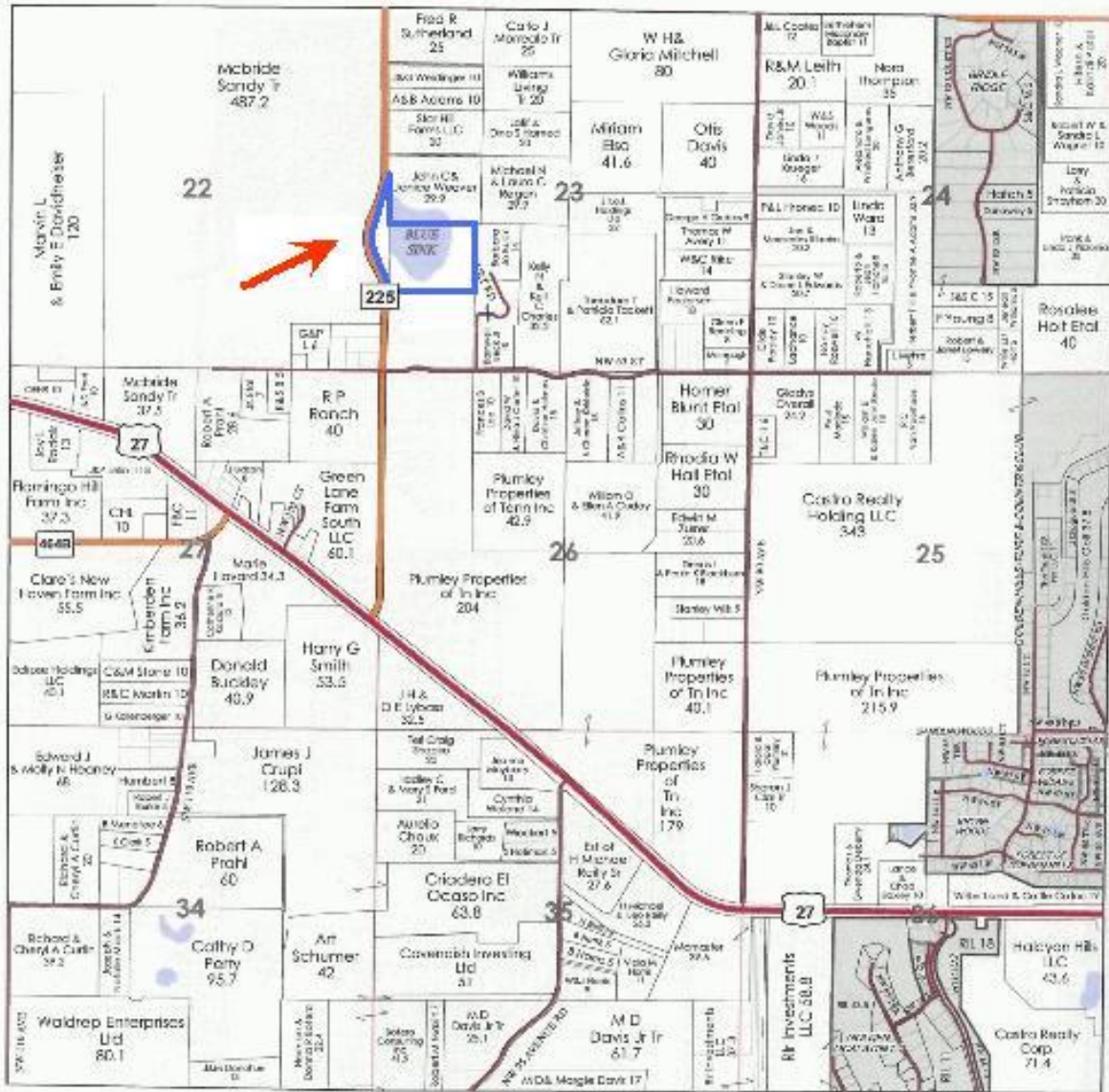


T.14S. - R.20E. (S.E.)



(S.E.)

See T.14S. - R.20E. (N.E.) Page 68



See T.14S. - R.20E. (S.W.) Page 69

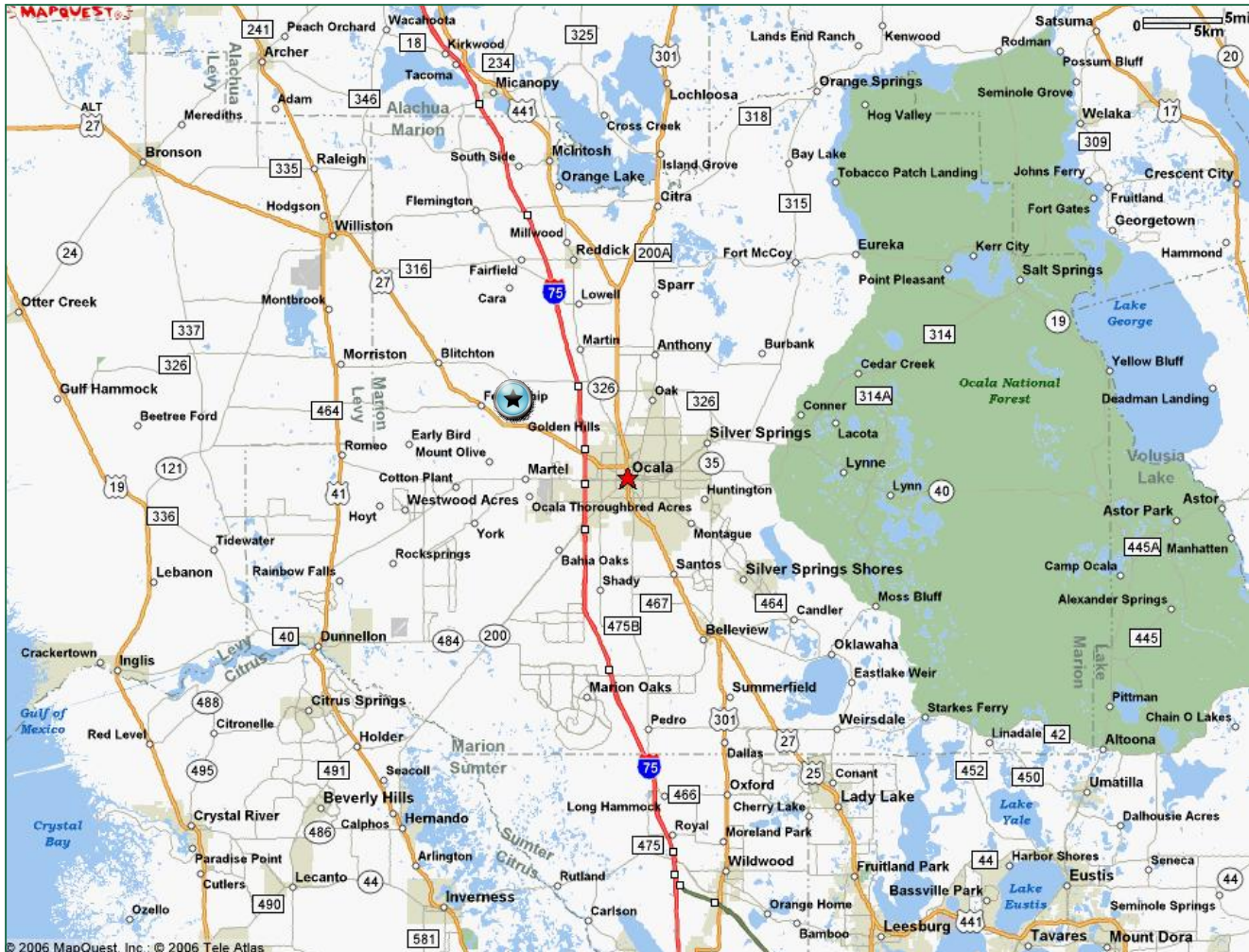
See T.14S. - R.21E. (S.W.) Page 73

See T.15S. - R.20E. (N.E.) Page 104

# Directions

## 37 ac on Hwy 225

McBride Land & Development, Co.



### From Ocala:

Take US 27 NW towards Williston. Make Right (heading North) on Hwy 225. Property located approximately 9/10 of a mile on the Right (East side of the road).