

# ORANGE LAKE ACRES

84± AC

Marion County, FL

REDUCED!!!

McBride Land & Development, Co.



- \* HUNTERS DREAM!!!! Located on beautiful Orange Lake, this 84± acre tract is absolutely amazing and is being offered at only \$2,995 per acre!!!
- \* Wooded parcel with gorgeous oak hammocks, palm trees and plenty of other native vegetation
- \* TONS of wildlife including great deer and turkey populations
- \* Paved road frontage on Hwy 318 across from the University of Florida's Agricultural Facility
- \* Minutes from Gainesville and Ocala, this unique property would be a great get-a-way for any and all outdoor enthusiasts
- \* Parcel is currently under a conservation easement (historical artifacts) which will protect the integrity and beauty of this wonderful slice of nature ...
- \* Marion County Parcel ID #'s 03600-000-00, 03380-000-00 & 03844-001-00

\$250,113

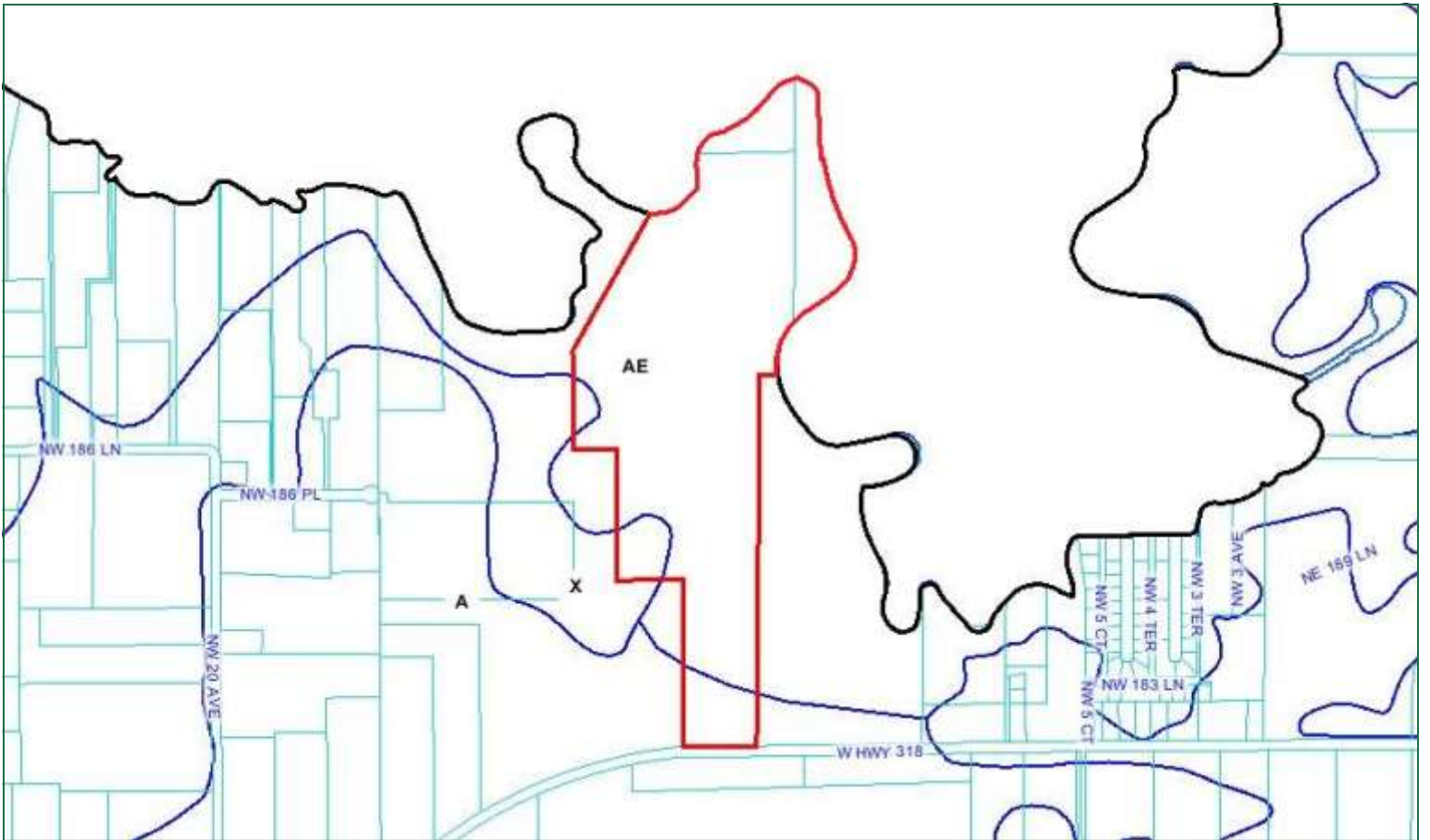
(\$2,995 / acre)



1553 SE Fort King Street  
Ocala, Florida 34471

Phone (352) 401-3755  
Fax (352) 401-3757

[www.mcbrideland.com](http://www.mcbrideland.com)

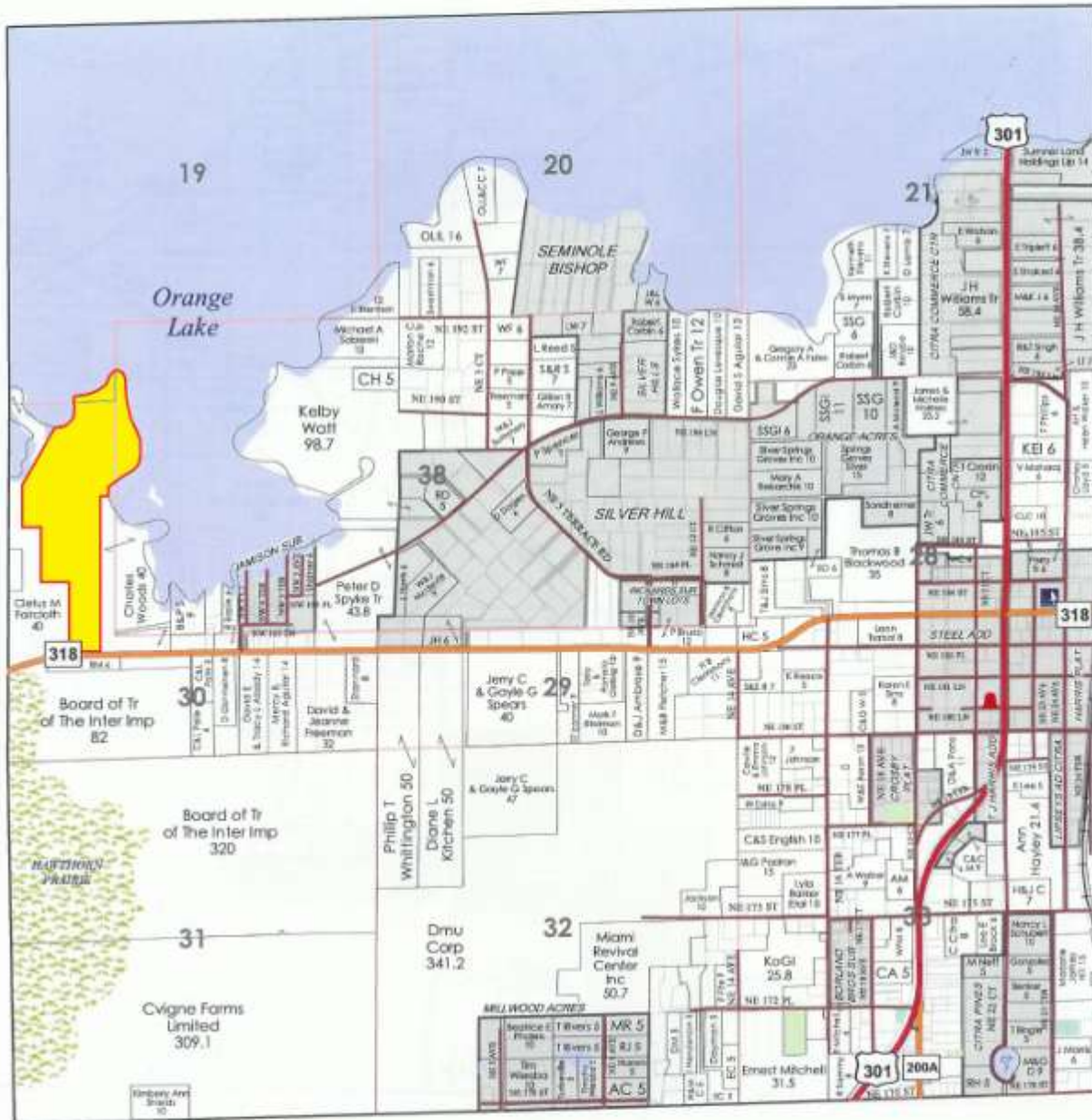


T.12S. - R.22E. (S.W.)



Alachua County

(S.W.)



See T.12S. - R.21E. (S.E.) Page 22

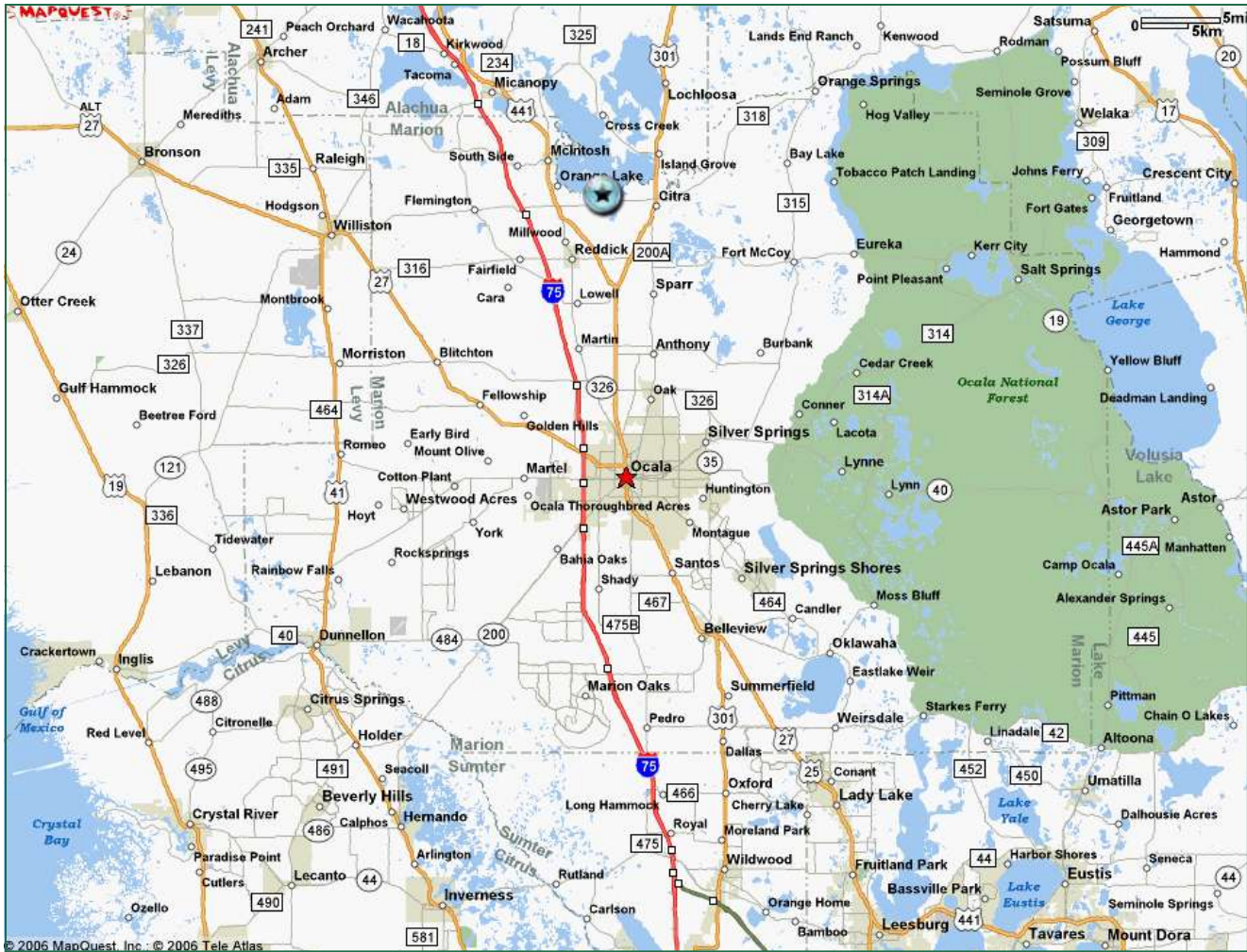
See T.12S. - R.22E. (S.E.) Page 24

See T.13S. - R.22E. (N.W.) Page 47

# Directions

## Orange Lake Acres

McBride Land & Development, Co.



### From Ocala:

Take Hwy 441 North. Make a Right (heading East) on Hwy 318. Property located approximately 5.75 miles on the Left (North side of Hwy 318).

### From Gainesville:

Take Hwy 441 South. Make a Left (heading East) on Hwy 318. Property located approximately 5.75 miles on the Left (North side of Hwy 318).