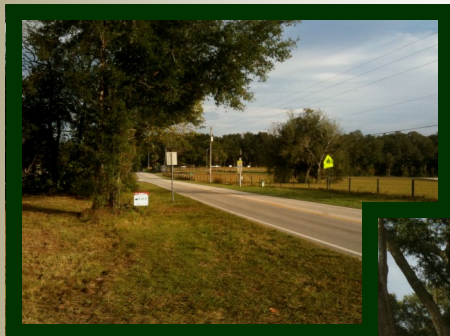


# 14.53 acres on Hwy 329

*Sparr, FL*

- **UNBELIEVABLE PRICE ... ONLY \$7,999 / ac!!!**
- Beautiful acreage with **GREAT LOCATION** (minutes from town)
- **ALL HIGH & DRY** with Paved Road Frontage on Hwy 329
- Cleared with scattered oaks
- Located just 1/4 mile E of Jax Rd
- Marion County Tax Parcel ID # 07855-001-00
- Owner financing available (15% Down, 8.9%, Pmt = \$1,029)
- Don't miss this opportunity Call today for more info!



## \$116,225

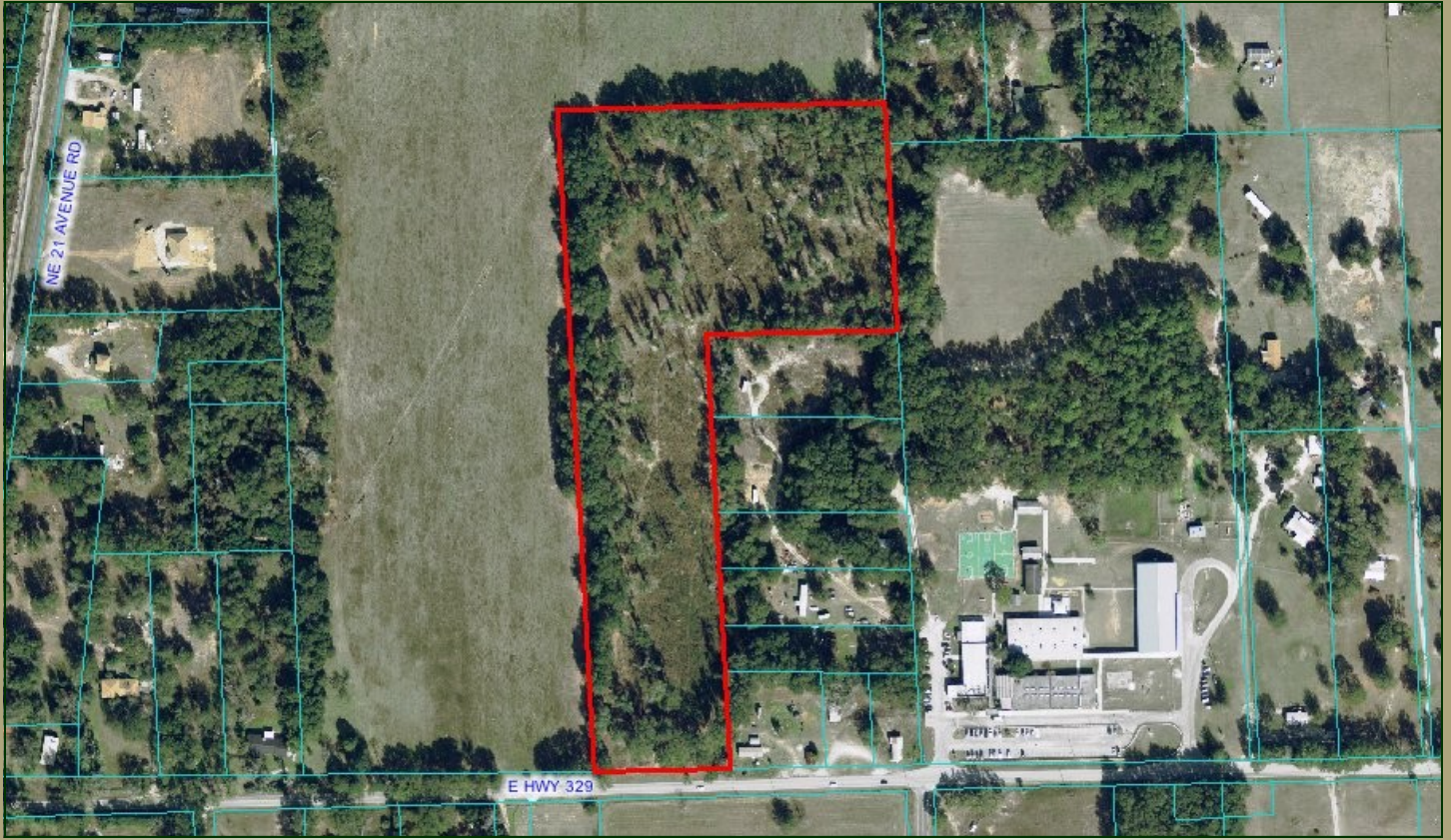
[www.mcbrideland.com](http://www.mcbrideland.com)

 **McBRIDE**  
LAND & DEVELOPMENT CO.  
Licensed Real Estate Broker

Phone: (352) 401-3755

Fax: (352) 401-3757

# Aerial



# Flood Plain



# Plat Map

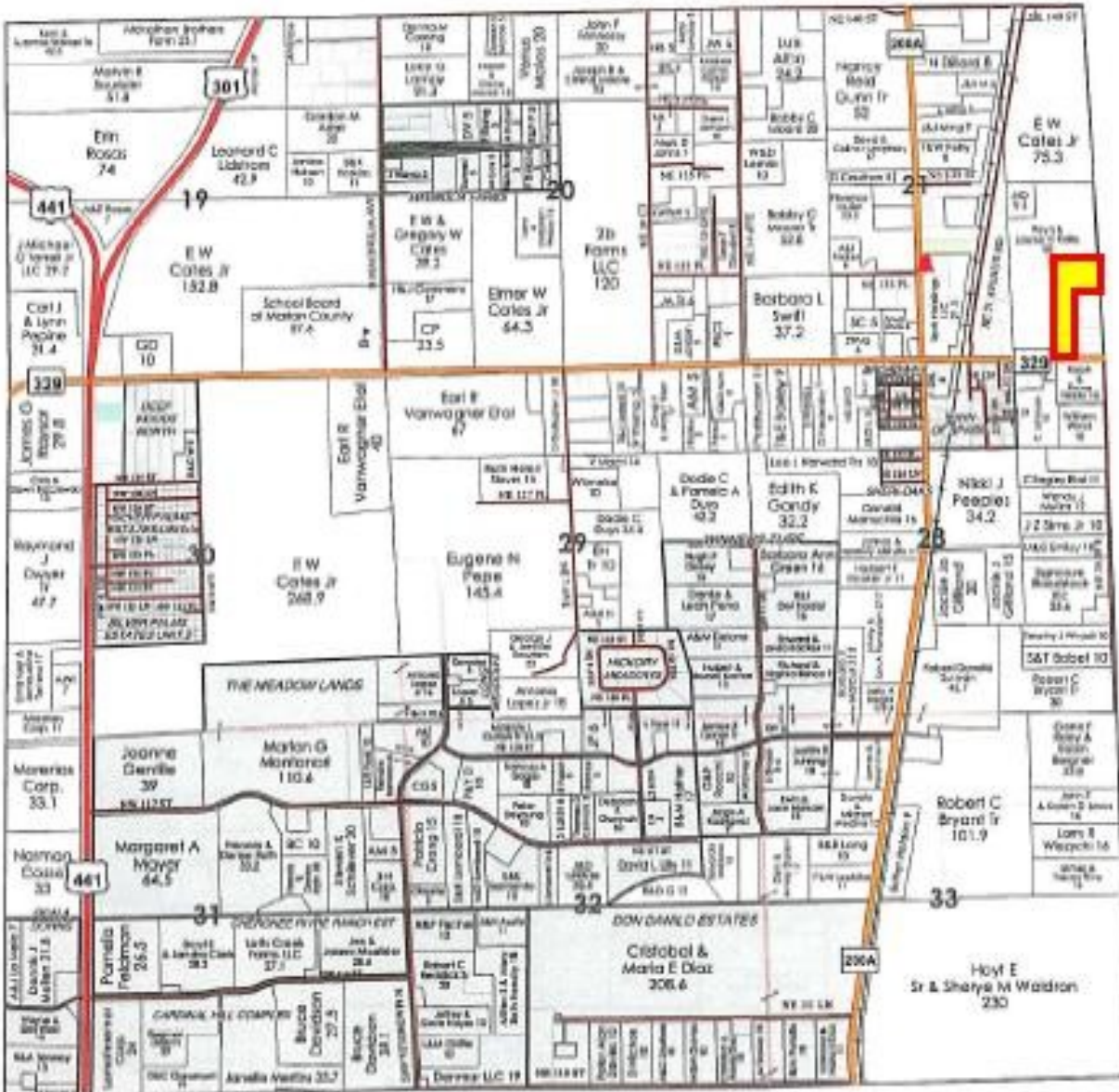
## 14.53 acres - Hwy 329

T.13S. - R.22E. (S.W.)



(S.W.)

See T.13S. - R.22E. (N.W.) Page 47



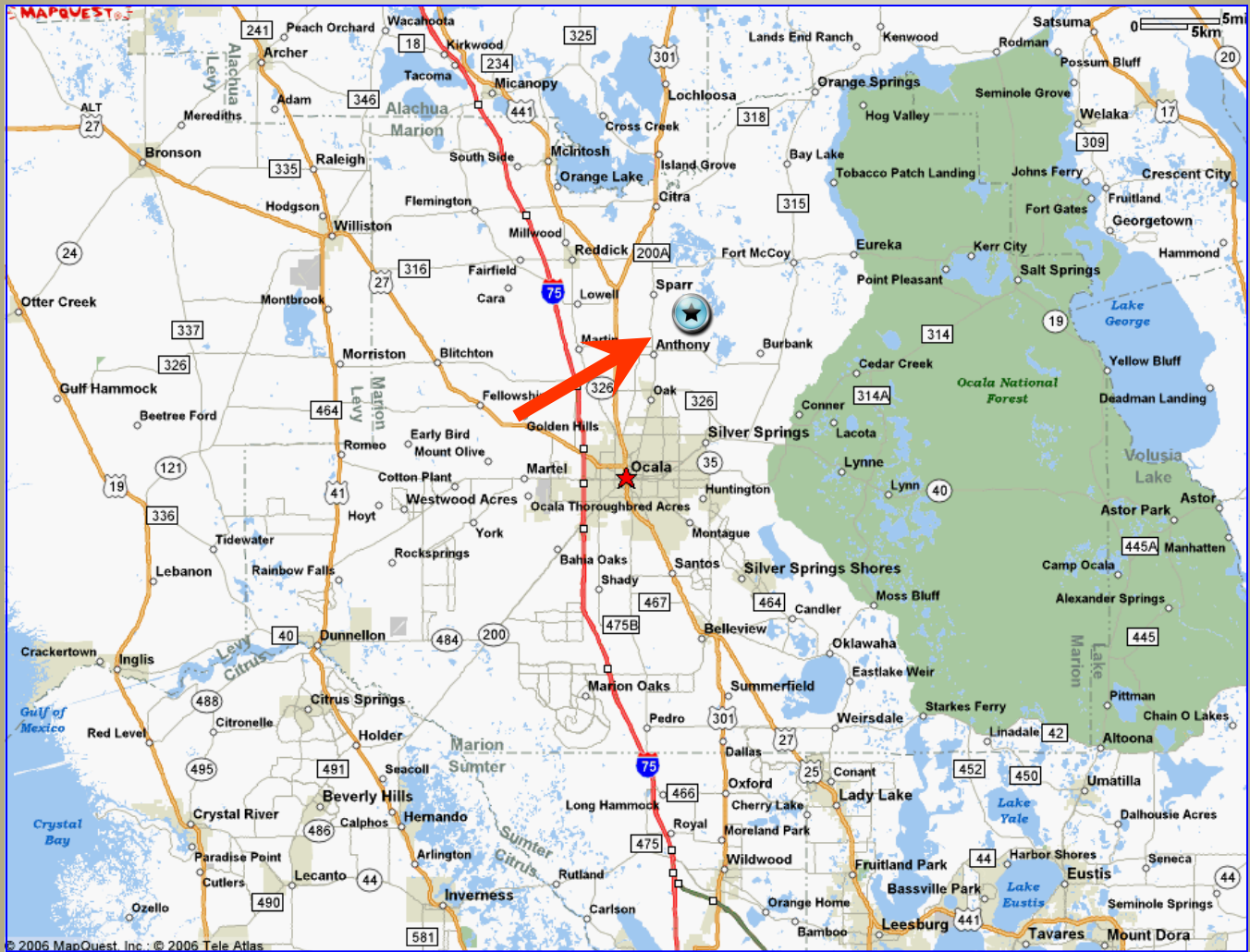
See T.13S. - R.22E. (S.E.) Page 46

See T.13S. - R.22E. (S.E.) Page 50

See T.13S. - R.22E. (N.W.) Page 75

# Directions

## 14.53 acres - Hwy 329



### From Ocala:

Take Jacksonville Road N to Hwy 329, make right (heading East), property located approximately  $\frac{1}{4}$  mile on left (north side of road).