

300 AC DEVELOPMENT TRACT

Ocala, FL

McBride Land & Development, Co.

- * **REDUCED** BY OVER... **\$6.5 MILLION DOLLARS!!!**
- * Great Investment or Development Potential!
- * 300 acres pending approval for 600 residential lots
- * Land Use - Medium Density Residential (expected to have DCA approval by December 2009)
- * Zoning - PUD₂ (2 units per acre)
- * Adjacent to prestigious Golden Ocala Golf & Equestrian Club
- * Public Water and Sewer available just North of site in the Golden Ocala subdivision
- * Approximately ¼ mile paved road frontage on NW 80th Ave
- * Completely HIGH & DRY!!!
- * Marion County Tax Parcel ID #21068-002-00

Was originally **\$13,500,000** reduced to only **\$6,870,000**

(only **\$22,900/acre!!!**)



1553 SE Fort King Street
Ocala, Florida 34471

Phone (352) 401-3755

Fax (352) 401-3757

www.mcbrideland.com

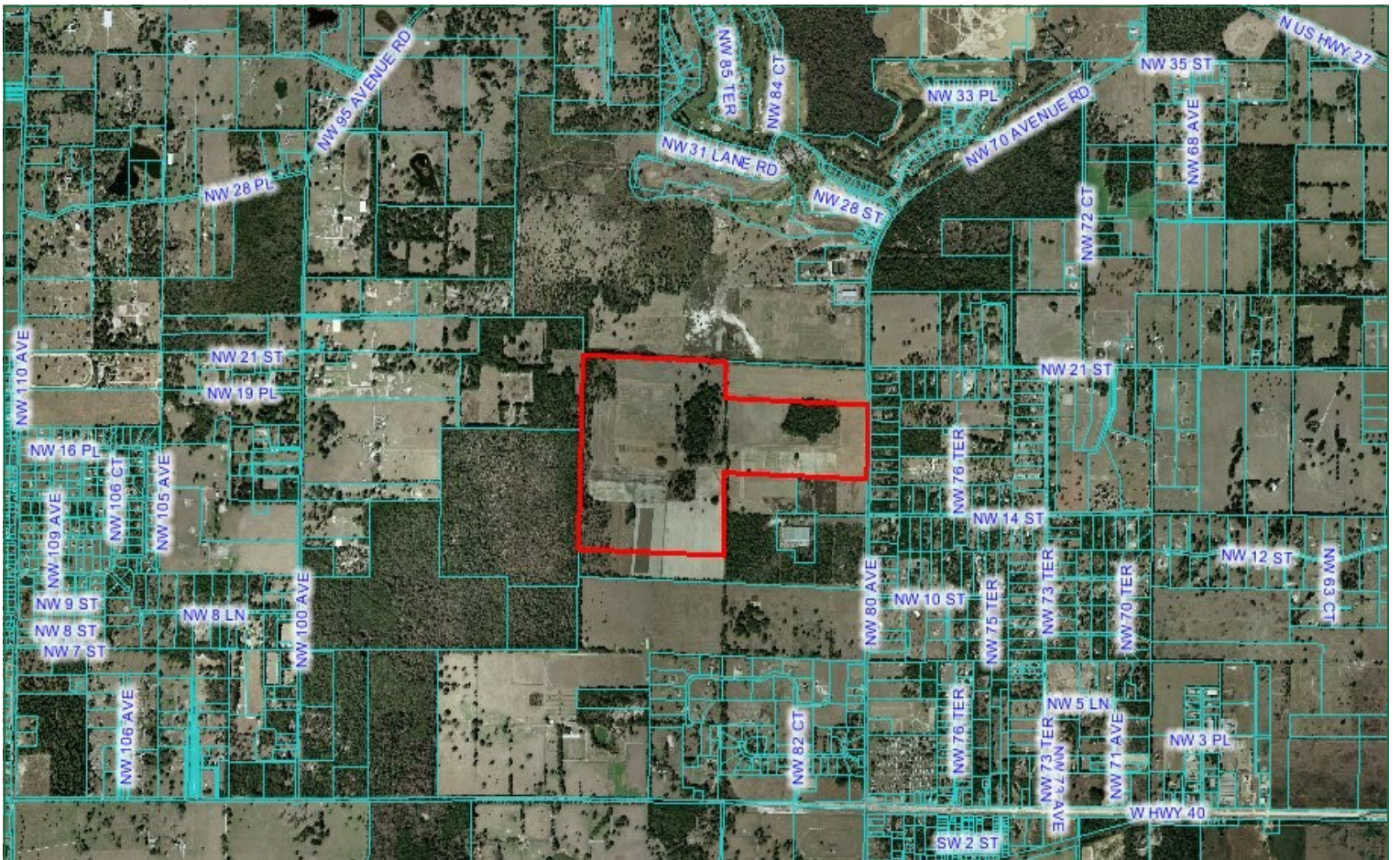


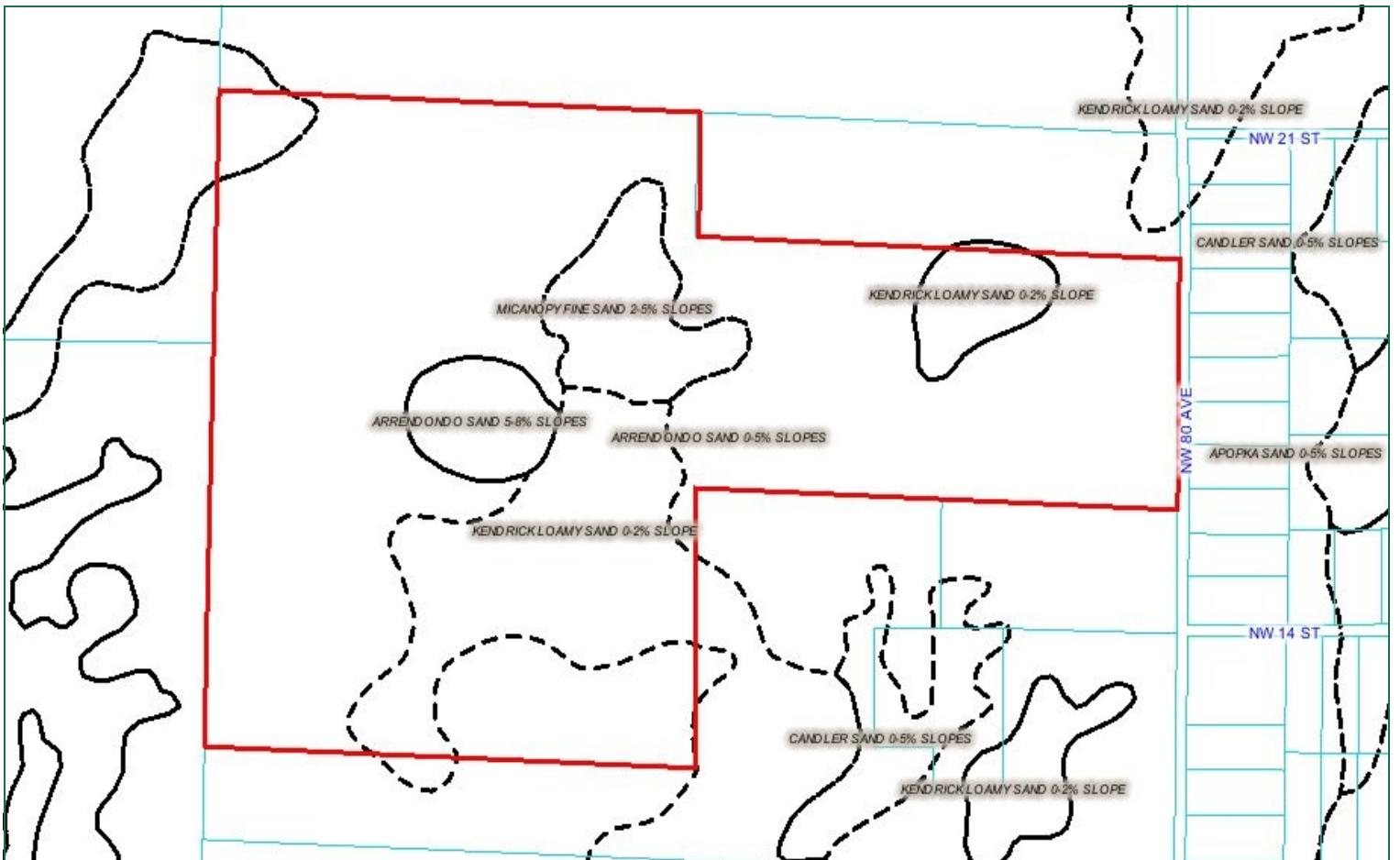
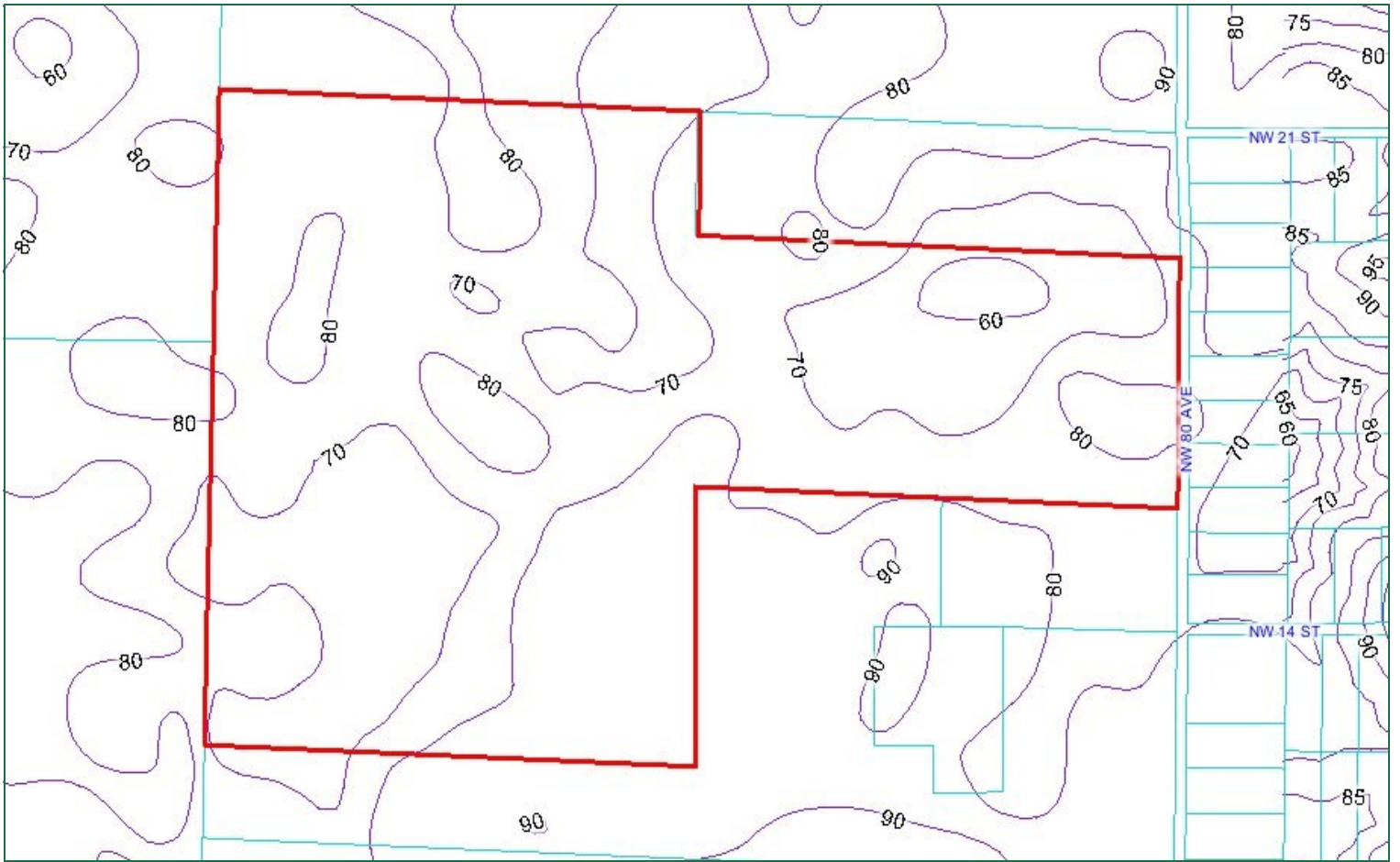
McBride Land & Development, Co.



McBride Land & Development, Co.



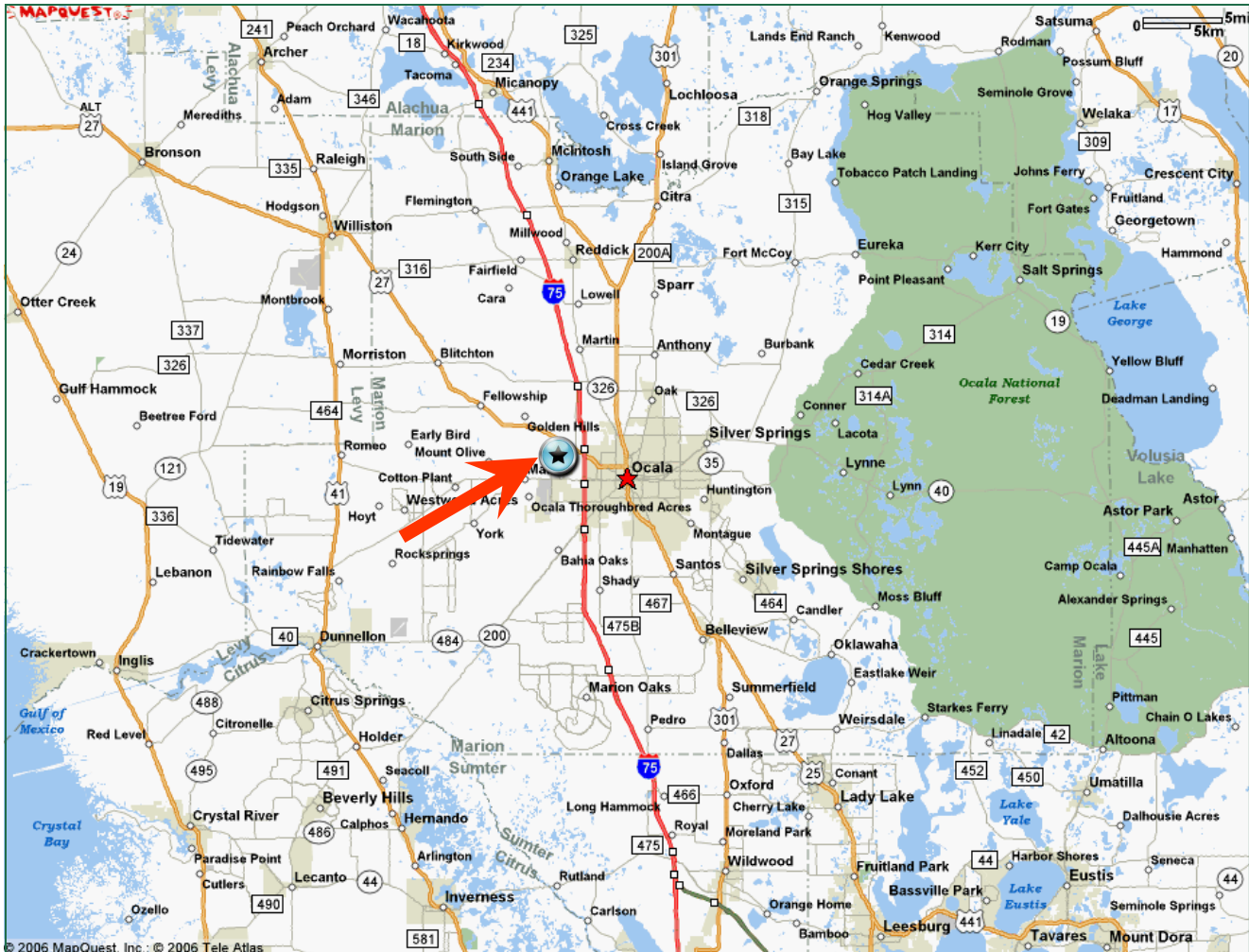




Directions

300 ac Residential Development

McBride Land & Development, Co.



From Ocala:

Take Hwy 27 NW towards Williston. Make a Left (heading South) on NW 70th Ave Rd (aka Hwy 225A). This road turns into NW 80th Ave. Property located approximately 2 miles on your Right (West side of the road).