

# LAKE WEIR COTTAGES

Ocklawaha, FL

McBride Land & Development, Co.



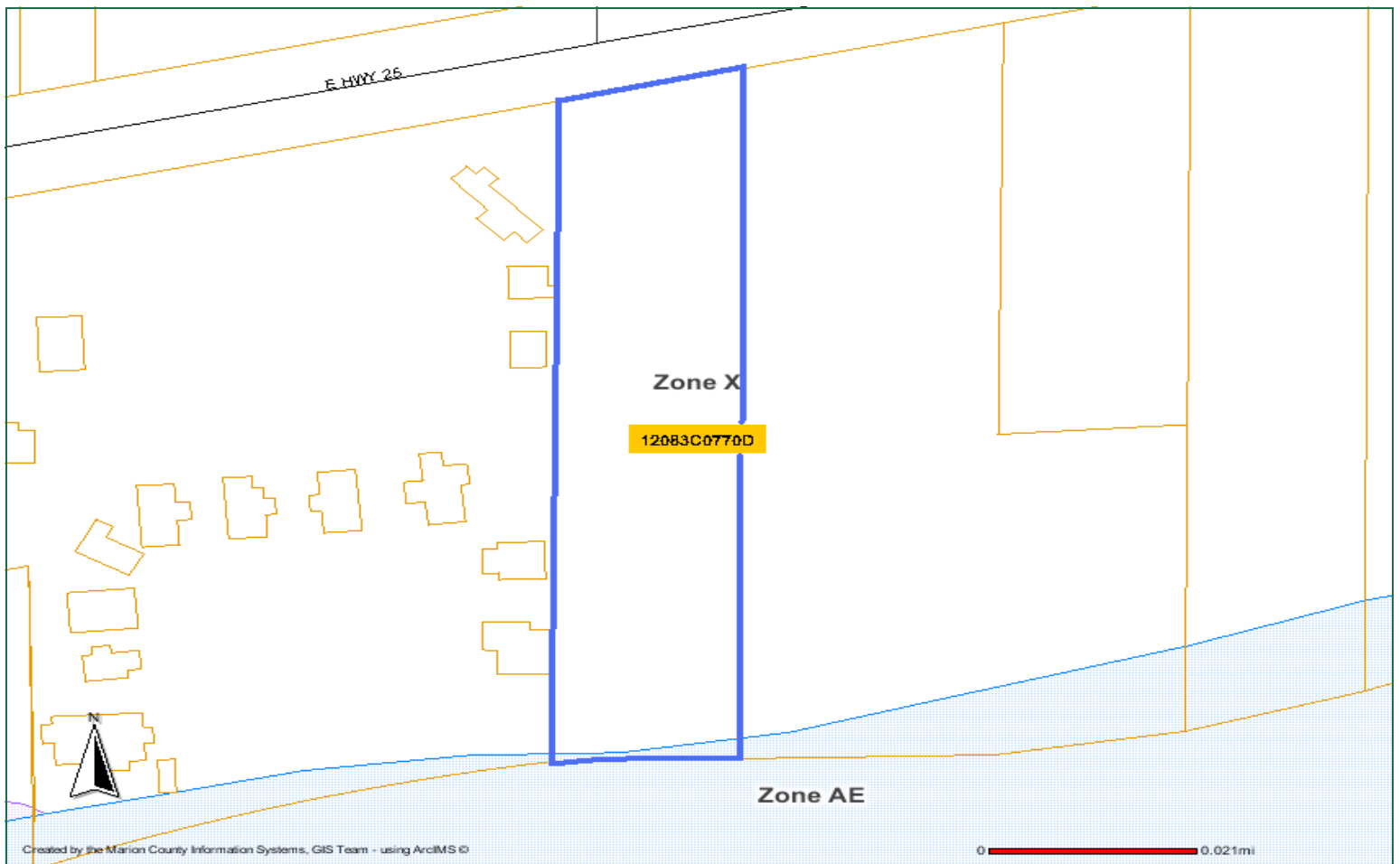
- \* Each cottage is approx. 810 SF with 2 BR/1 BR on 1.11 +/- ac with over 100ft. Of gorgeous sandy beach lake frontage.
- \* Recently renovated with new tile and carpet throughout, new wood cabinets in kitchens, new appliances, including stackable washer/dryer on covered porch!
- \* Fresh paint inside and out as well as new fixtures and blinds
- \* Also, newly installed professional landscaping and irrigation system.
- \* New dock recently constructed.

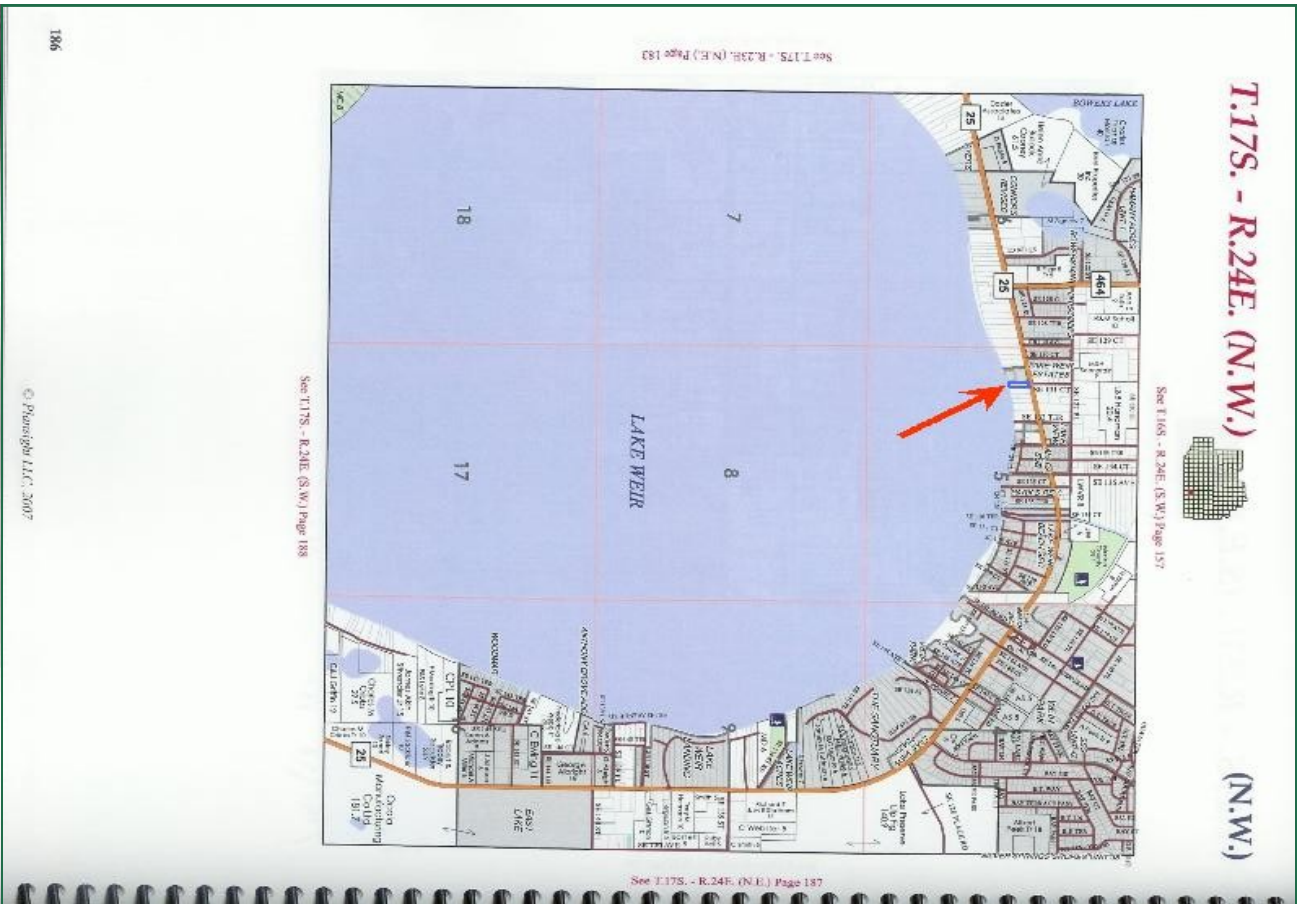
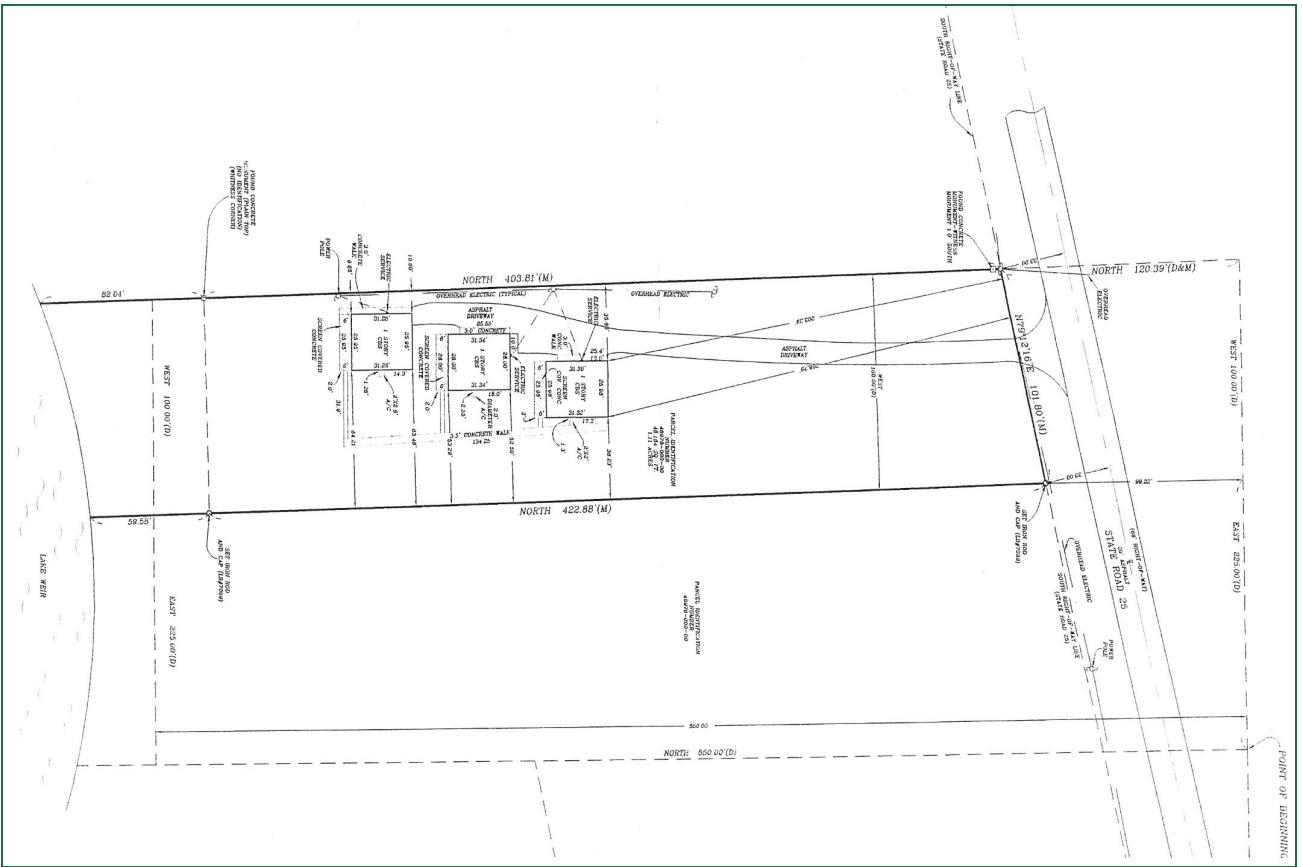
Cottage #8	<b>SOLD</b>	(light yellow - closest to the lake)
Cottage #9	<b>SOLD</b>	(light blue - middle cottage)
Cottage #10	<b>\$199,900</b>	(light green - closest to the road)



1553 SE Fort King Street  
Ocala, Florida 34471

Phone (352) 401-3755  
Fax (352) 401-3757  
www.mcbrideland.com

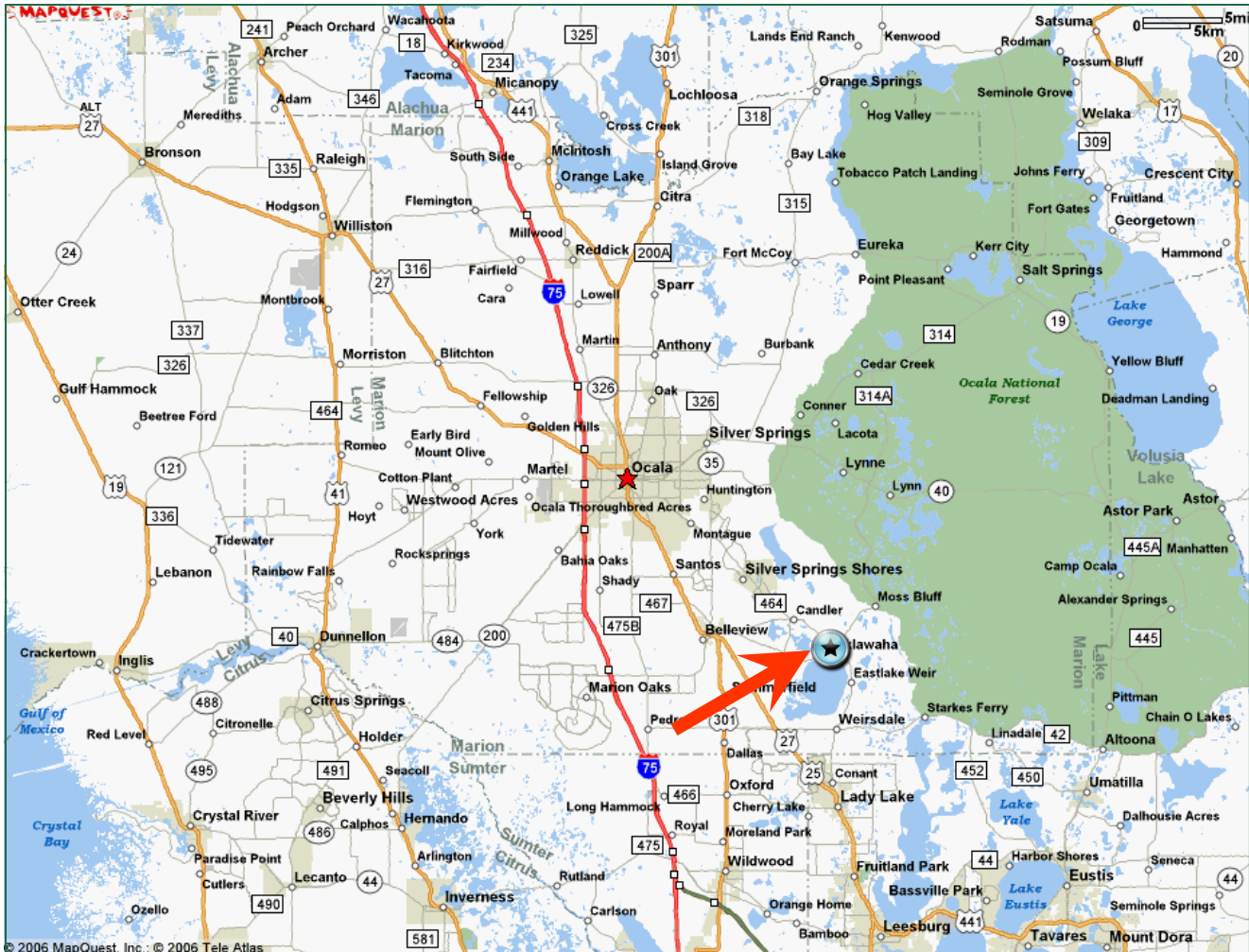




# Directions

## Lake Weir Cottages

McBride Land & Development, Co.



### From Ocala:

Take Hwy 464 (aka Maricamp Road or 17th Street) SE towards Lake Weir. Road dead ends into CR 25. Make a Left (heading East) on CR 25. Property located less than ½ mile on your Right (South side of the road). Signs visible from Road.