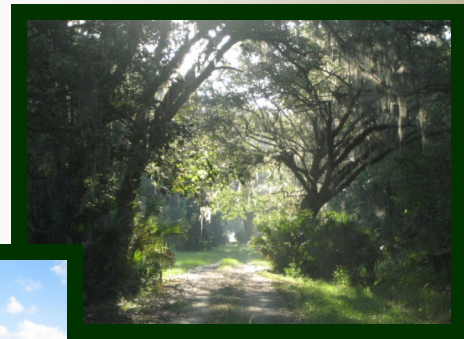
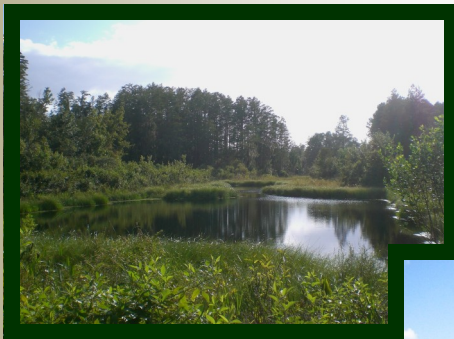


# *Pine Church Farm*

## *Ocala, FL*

- Little Slice of Heaven that is absolutely loaded with wildlife!
- 688 acres of Beautiful Hardwood/ Oak Hammocks, Gorgeously groomed pastures, Magnificent Cypress Heads, Ponds, and much more!
- Approximately 1.25 miles of paved road frontage and a very good interior road system.
- Owner willing to divide (subject to pricing adjustment).



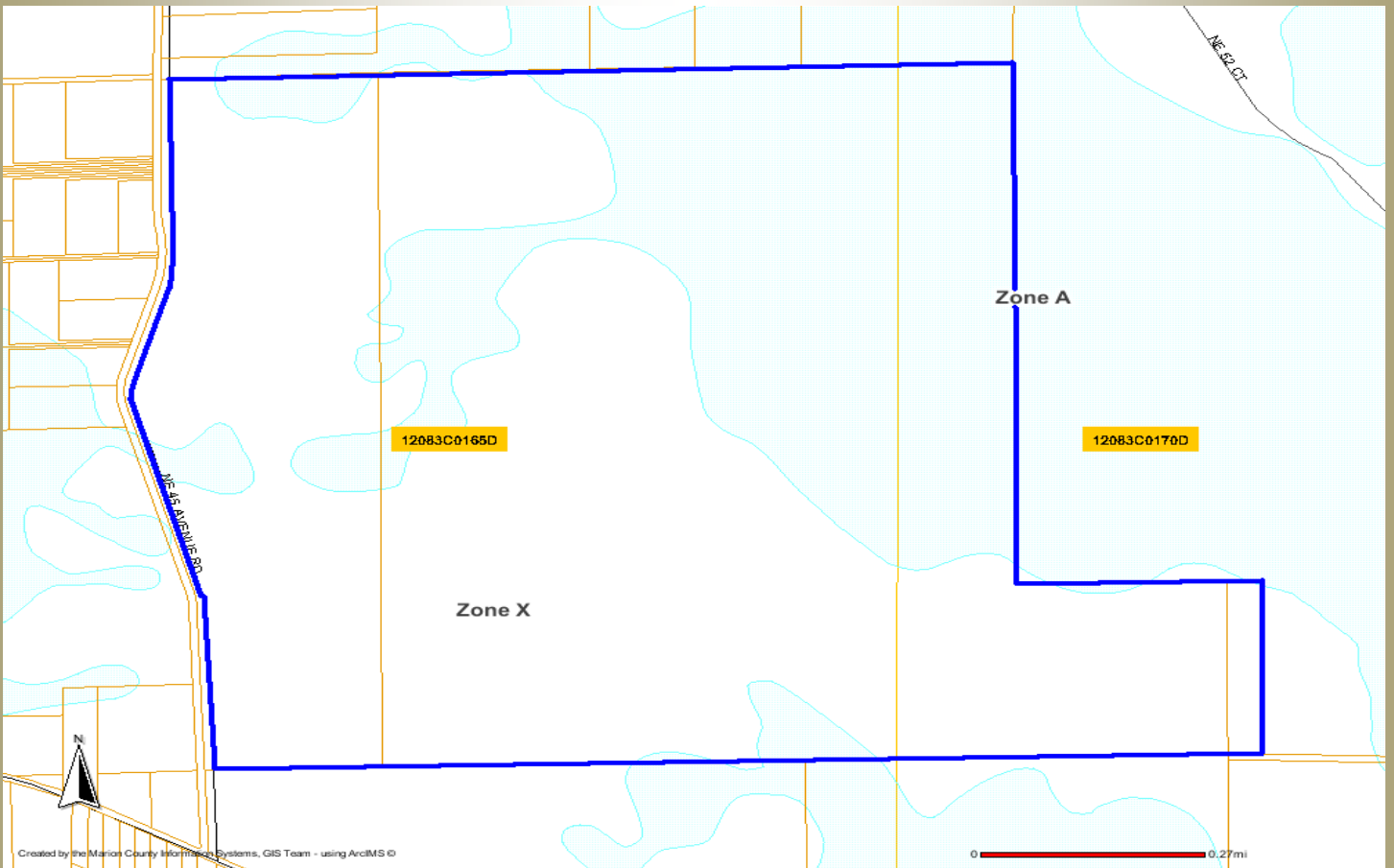
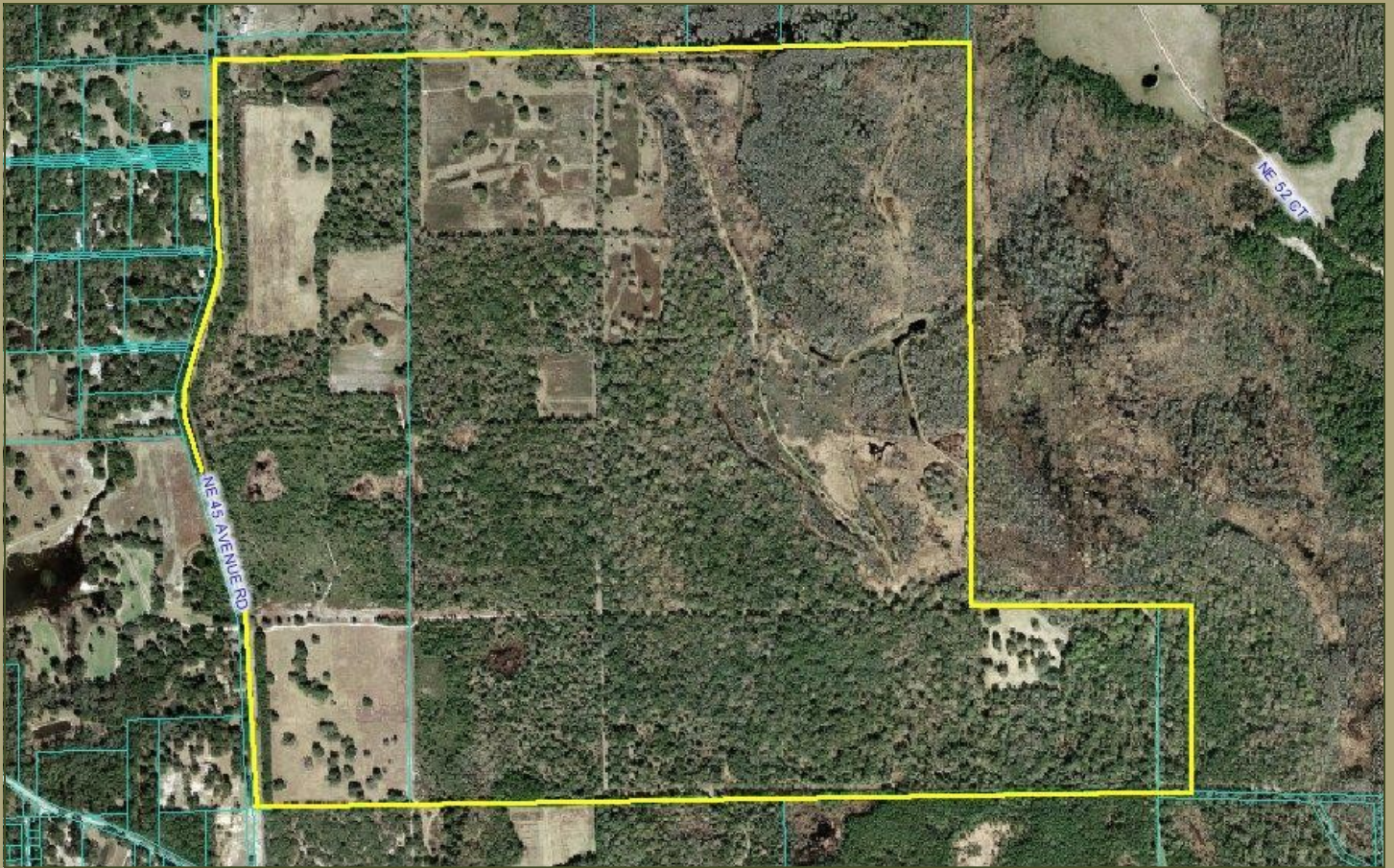
***Being offered whole for only \$4,500,000 (\$6,541 per acre!)***

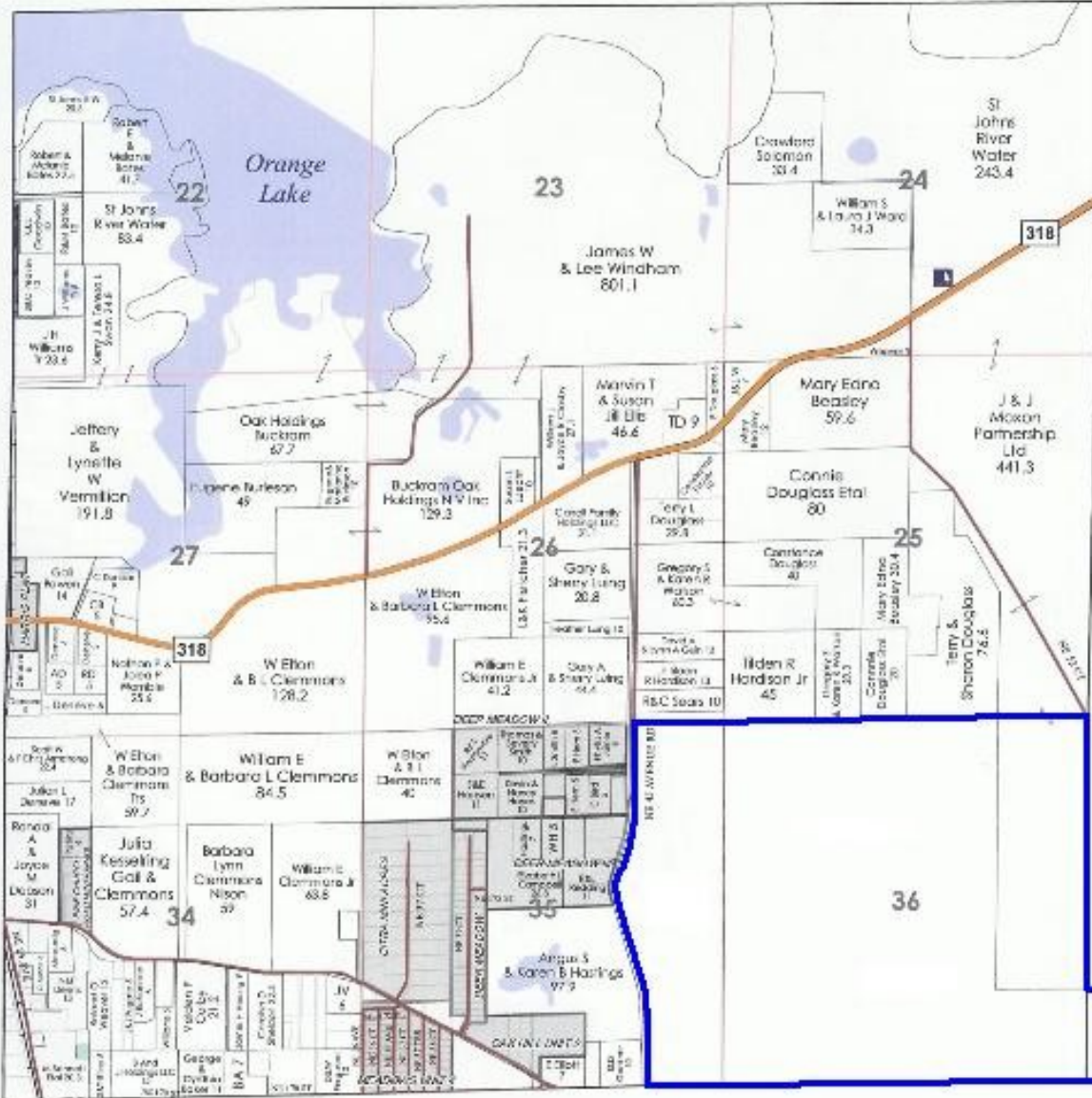


[www.mcbrideland.com](http://www.mcbrideland.com)

**352-401-3755**

**352-362-5226**





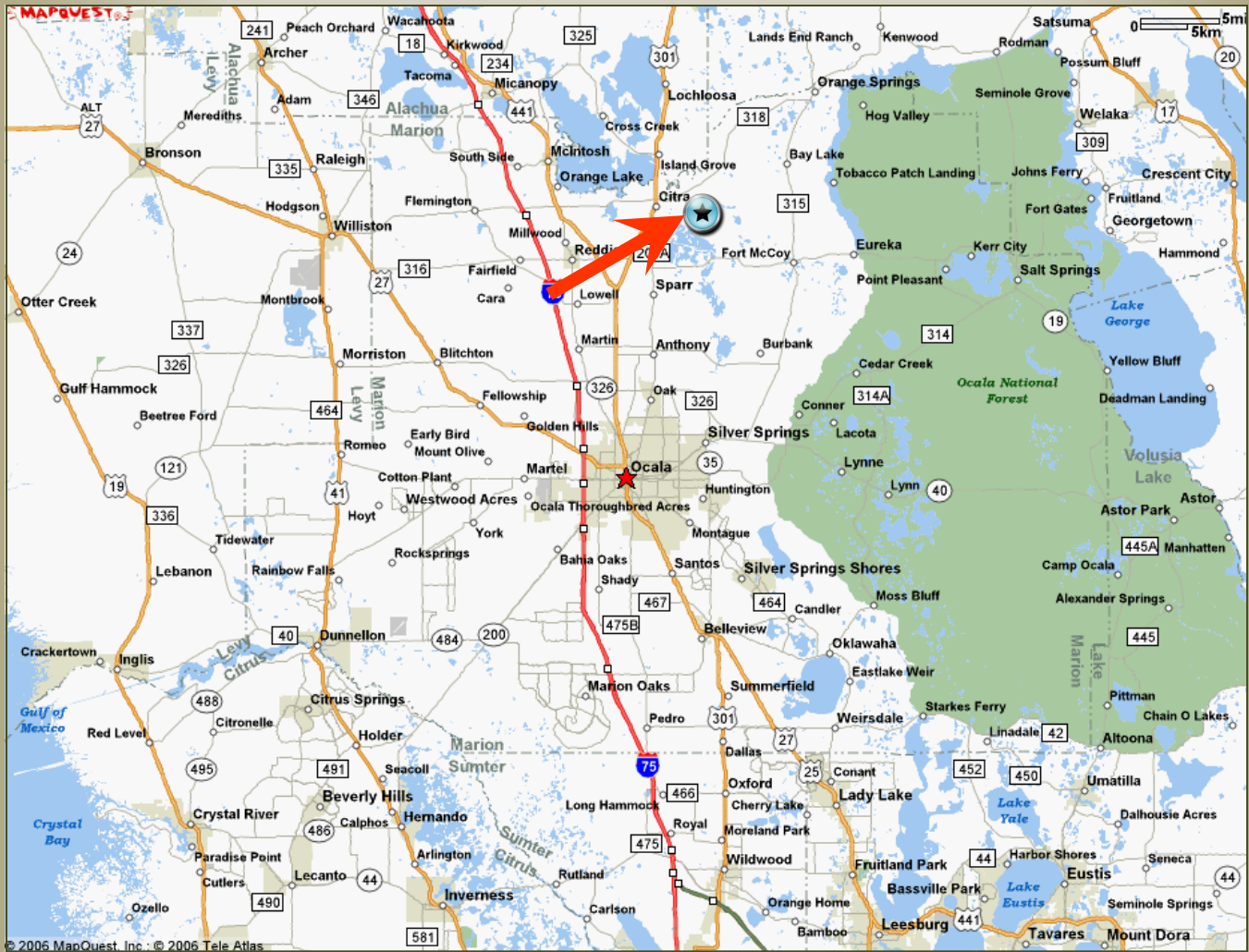
See T.12S. - R.22E. (S.W.) Page 23

See T.12S. - R.23E. (S.W.) Page 27

See T.13S. - R.22E. (N.E.) Page 48

# Directions

## Pine Church Farm



### From Ocala:

Take Hwy 441/301 North towards Gainesville. When Road splits, veer Right staying on Hwy 301 heading NE towards Citra. Take for approximately 4.75 miles. Turn Right on NE 175th Street (heading East) for approximately 2.42 miles. Turn Left on NE 45th Ave Road (heading North), property begins approximately 730 LF on your Right (East side of the road).